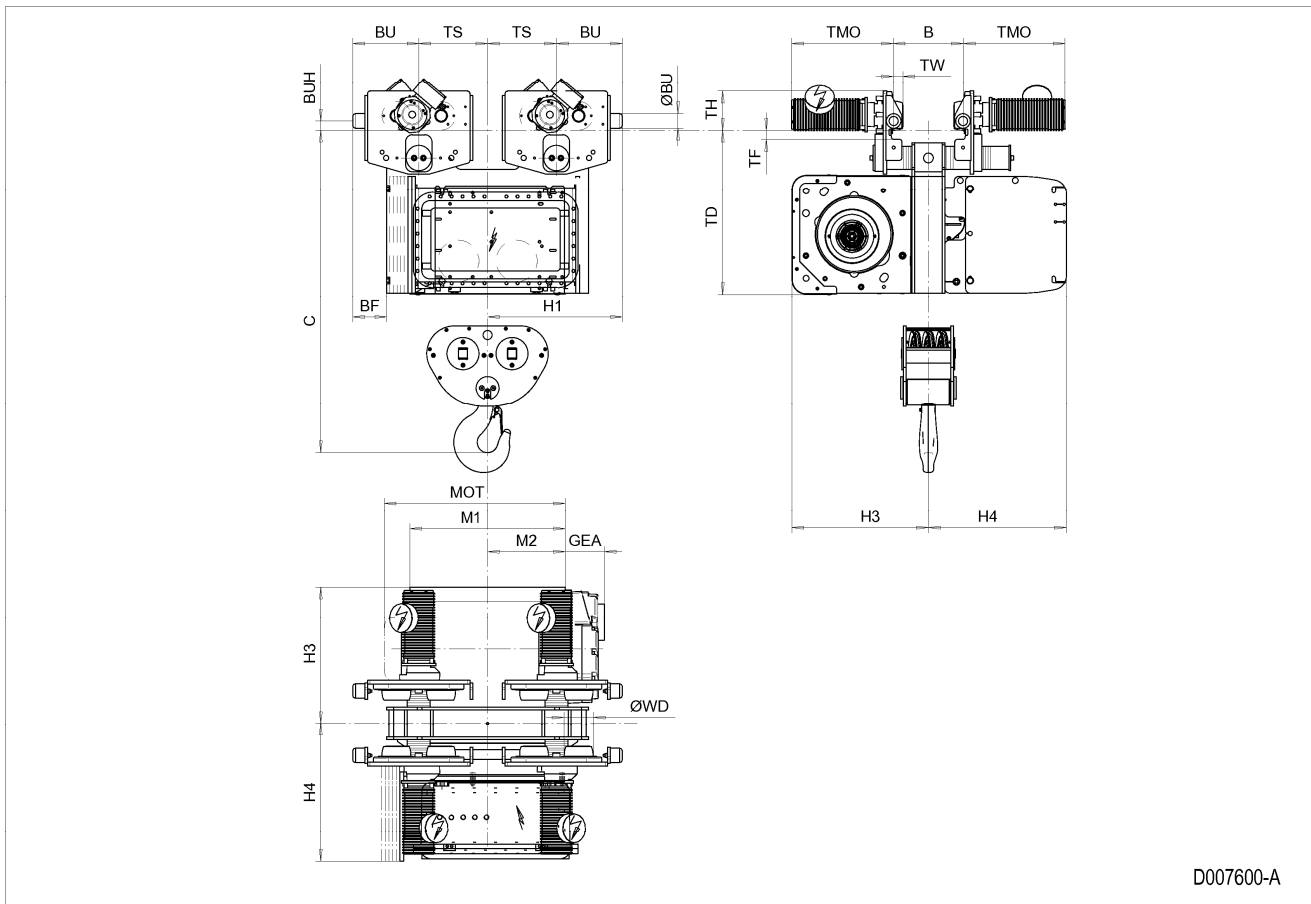


Normal Headroom Hoist EXSX5, REEVING: 062; Class I, Division 2



D007600-A

**Hoist dimensions**

HOL m	Length code	M1 mm	M2 mm	H1 mm	H3 mm	H3* mm	H4 mm	Weight kg
4	E	678	339	588	595	615	602	1102
6	F	828	414	588	595	615	602	1133
8	G	1018	509	788	595	615	602	1261
11	H	1268	634	788	595	615	602	1370
15	J	1618	809	788	595	615	602	1471

**Motor dimensions**

Motor	P5	P6	E4	E6
MOT (mm)	578	578	683	683
Weight (kg)	58	85	145	145

**Traveling dimensions**

Motor	MF06LA
TMO (mm)	398
Weight (kg)	7.8

**Trolley dimensions**

B min	B max	C	ØBU	ØWD	BU	BUH	GEA	TD	TF	TH	TW
100	610	1408	63	125	288	40	170	716	40	170	41.5

**Trolley dimensions**

Length code	BF	TS
E/F	148	300
G/H/J	42	500

D007600\_A  
252301

Note: Weight calculated with P5 and MF06LA motors, when B=300 mm.

Note: All dimensions in mm.

\* Please, disregard the dimension H3\*.