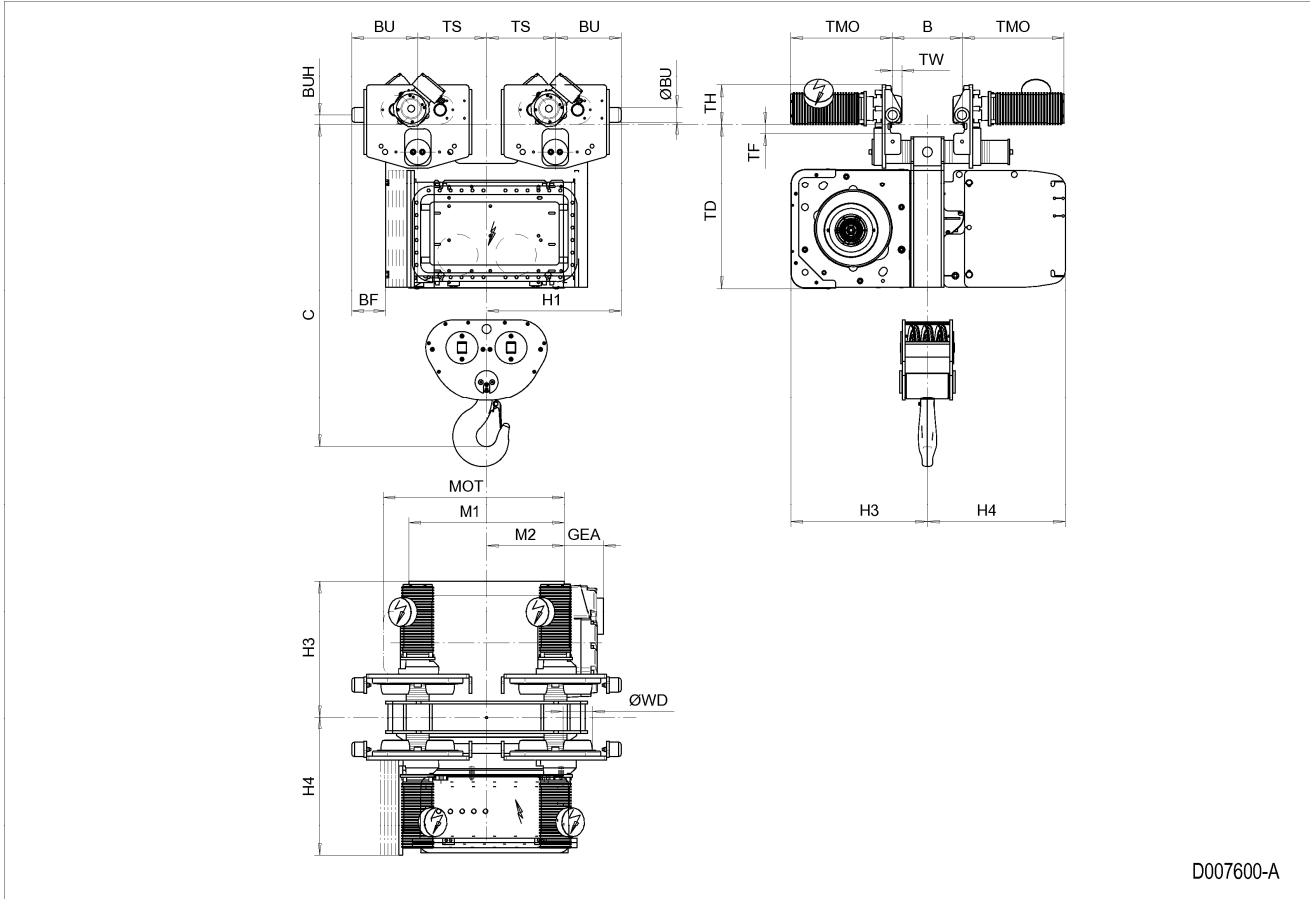


Normal Headroom Hoist EXSX5, REEVING: 062; Class I, Division 2



D007600-A

**Hoist dimensions**

HOL ft	Length code	M1 inch	M2 inch	H1 inch	H3 inch	H3* inch	H4 inch	Weight lb
13'-1"	E	26.69	13.35	23.15	23.43	24.21	23.7	2430
19'-8"	F	32.6	16.3	23.15	23.43	24.21	23.7	2498
26'-3"	G	40.08	20.04	31.02	23.43	24.21	23.7	2781
36'-1"	H	49.92	24.96	31.02	23.43	24.21	23.7	3021
49'-3"	J	63.7	31.85	31.02	23.43	24.21	23.7	3244

**Motor dimensions**

Motor	P5	P6	E4	E6
MOT (inch)	22.76	22.76	26.89	26.89
Weight ( lb)	128	187	320	320

**Traveling dimensions**

Motor	MF06LA
TMO (inch)	15.67
Weight (lb)	17

**Trolley dimensions**

B min	B max	C	ØBU	ØWD	BU	BUH	GEA	TD	TF	TH	TW
3.94	24.02	55.43	2.48	4.92	11.34	1.57	6.69	28.19	1.57	6.69	1.63

**Trolley dimensions**

Length code	BF	TS
E/F	5.83	11.81
G/H/J	-1.65	19.69

D007600\_A  
252301

Note: Weight calculated with P5 and MF06LA motors, when B=11.8 inch.

Note: All dimensions in inch.

\* Please, disregard the dimension H3\*.