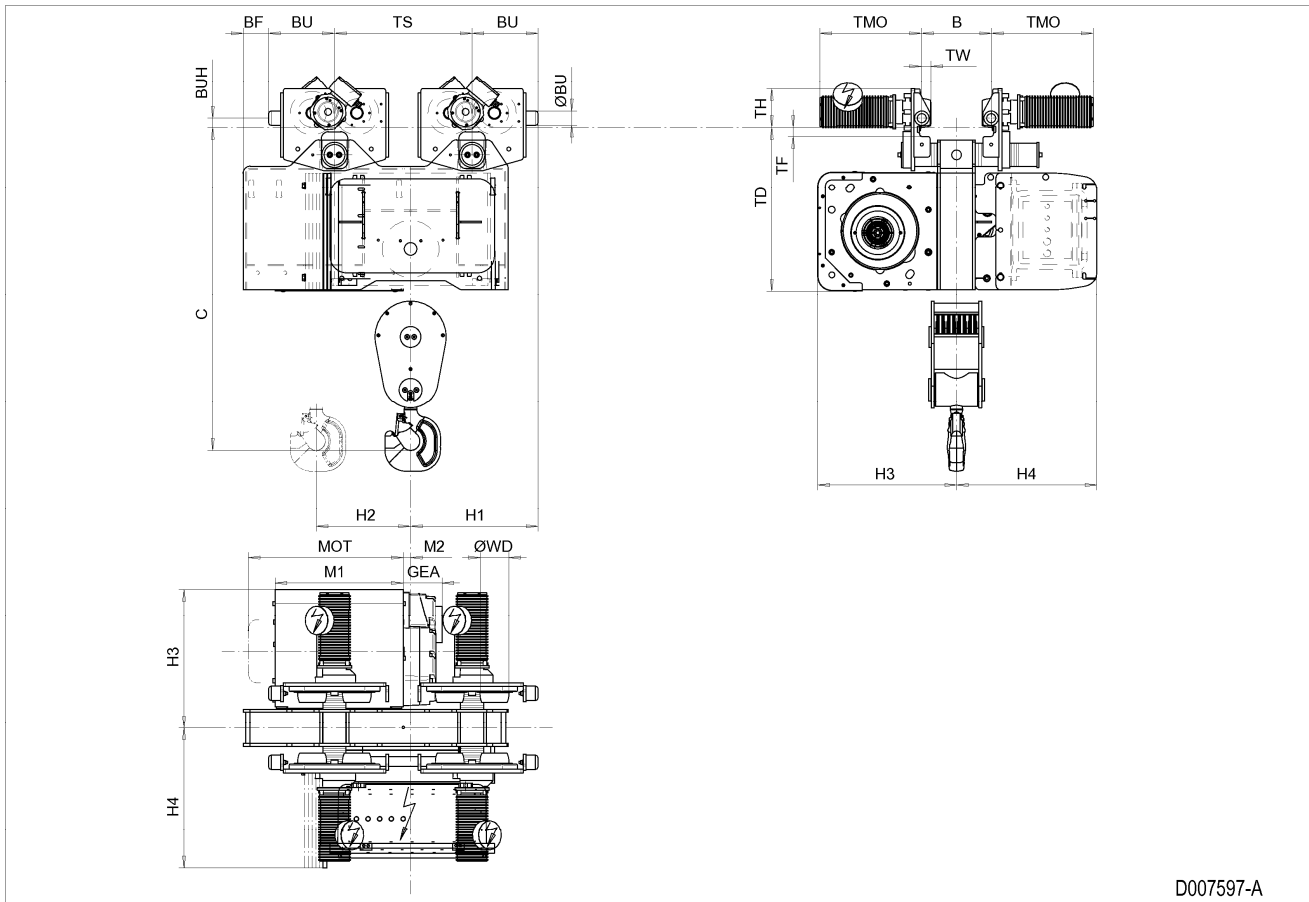


Normal Headroom Hoist EXSX5, REEVING: 081; Class I, Division 2



D007597-A

Hoist dimensions

HOL m	Length code	M1 mm	M2 mm	H1 mm	H2 mm	H3 mm	H3* mm	H4 mm	Weight kg
4.5	D	558	33	556	44	605	625	612	1120
6	E	678	33	556	53	605	625	612	1145
8	F	828	33	596	76	605	625	612	1217
10	G	1018	33	596	98	605	625	612	1257

Motor dimensions

Motor	P5	P6	E4	E6
MOT (mm)	578	578	683	683
Weight (kg)	58	85	145	145

Traveling dimensions

Motor	MF06LA
TMO (mm)	398
Weight (kg)	7.8

Trolley dimensions

B min	B max	C	ØBU	ØWD	BU	BUH	GEA	TF	TD	TH	TW
110	610	1413	63	125	288	40	170	39.5	716	170	41.5

Trolley dimensions

Length code	BF	TS
D/E	110	600
F/G	370	720

D007597_A
252284

Note: All dimensions in mm.

Note: Weight calculated with P5 and MF06LA motors, when B=300 mm.

* Please, disregard the dimension H3*.