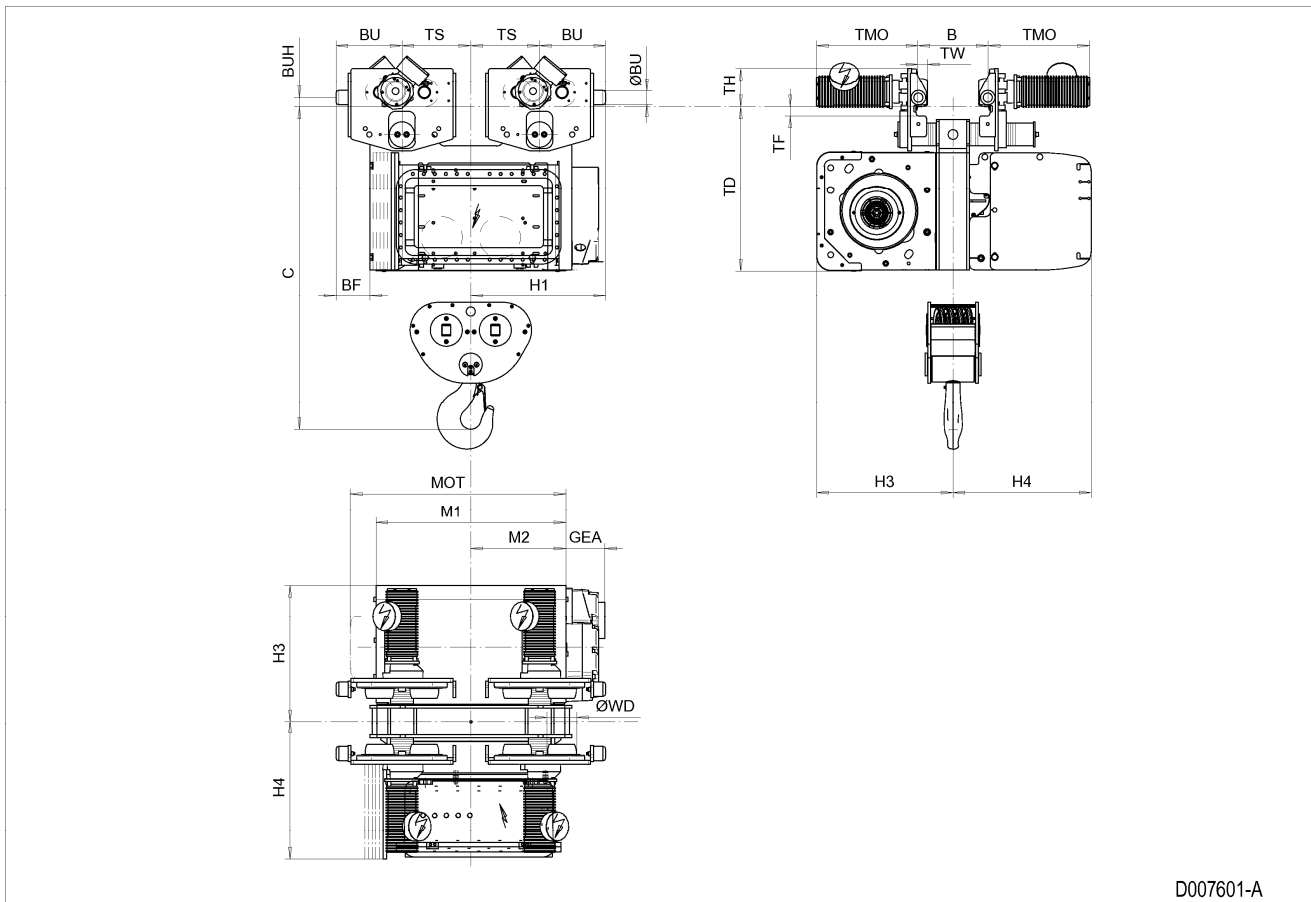


Normal Headroom Hoist EXSX5, REEVING: 082; Class I, Division 2



D007601-A

Hoist dimensions

HOL m	Length code	M1 mm	M2 mm	H1 mm	H3 mm	H3* mm	H4 mm	Weight kg
4.5	F	828	414	588	595	615	602	1146
6	G	1018	509	788	595	615	602	1274
8	H	1268	634	788	595	615	602	1383
11.5	J	1618	809	788	595	615	602	1484

Motor dimensions

Motor	P5	P6	E4	E6
MOT (mm)	578	578	683	683
Weight (kg)	58	85	145	145

Traveling dimensions

Motor	MF06LA
TMO (mm)	398
Weight (kg)	7.8

Trolley dimensions

B min	B max	C	ØBU	ØWD	BU	BUH	GEA	TD	TF	TH	TW
100	610	1408	63	125	288	40	170	716	40	170	41.5

Trolley dimensions

Length code	BF	TS
F	148	300
G/H/J	-42	500

D007601_A
252556

Note: Weight calculated with P5 and MF06LA motors, when B=300 mm.

Note: All dimensions in mm.

* Please, disregard the dimension H3*.