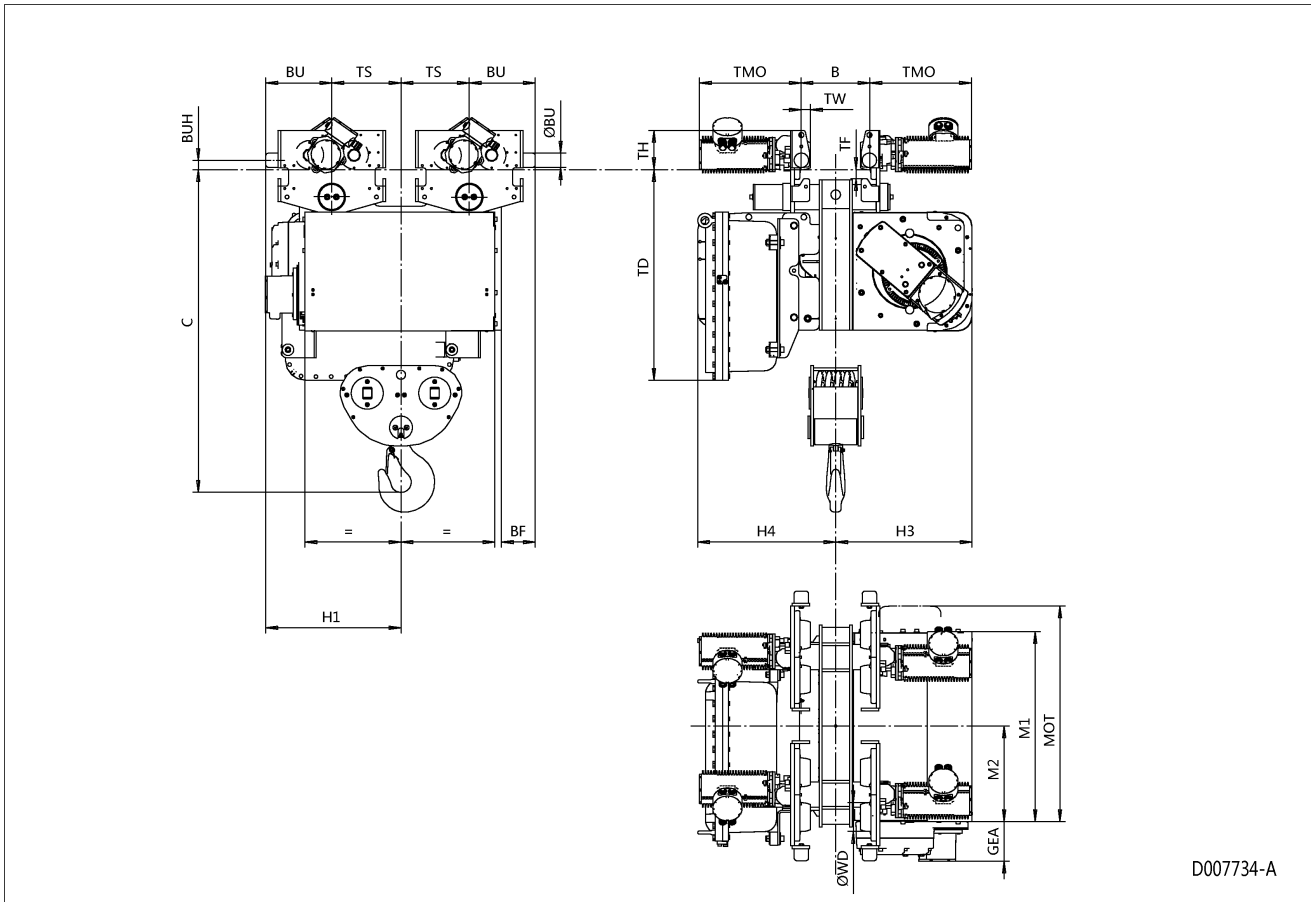


Normal Headroom Hoist EXSX5, REEVING: 082; Class I, Division 1



D007734-A

Hoist dimensions

HOL ft	Length code	M1 inch	M2 inch	H1 inch	H3 inch	H3* inch	H4 inch	Weight lb
14'-9"	F	32.6	16.3	23.15	23.43	24.21	23.7	3043
19'-8"	G	40.08	20.04	31.02	23.43	24.21	23.7	3429
26'-3"	H	49.92	24.96	31.02	23.43	24.21	23.7	3550
37'-9"	J	63.7	31.85	31.02	23.43	24.21	23.7	3726

Motor dimensions

Motor	E4	E6
MOT (inch)	26.5	26.5
Weight (lb)	320	320

Traveling dimensions

Motor	MF07E
TMO (inch)	17.44
Weight (lb)	29

Trolley dimensions

B min	B max	C	ØBU	ØWD	BU	BUH	GEA	TD	TF	TH	TW
3.94	24.02	55.43	2.48	4.92	11.34	1.57	6.77	36.22	1.54	6.69	1.63

Trolley dimensions

Length code	BF	TS
F	5.83	11.81
G/H/J	-1.65	19.69