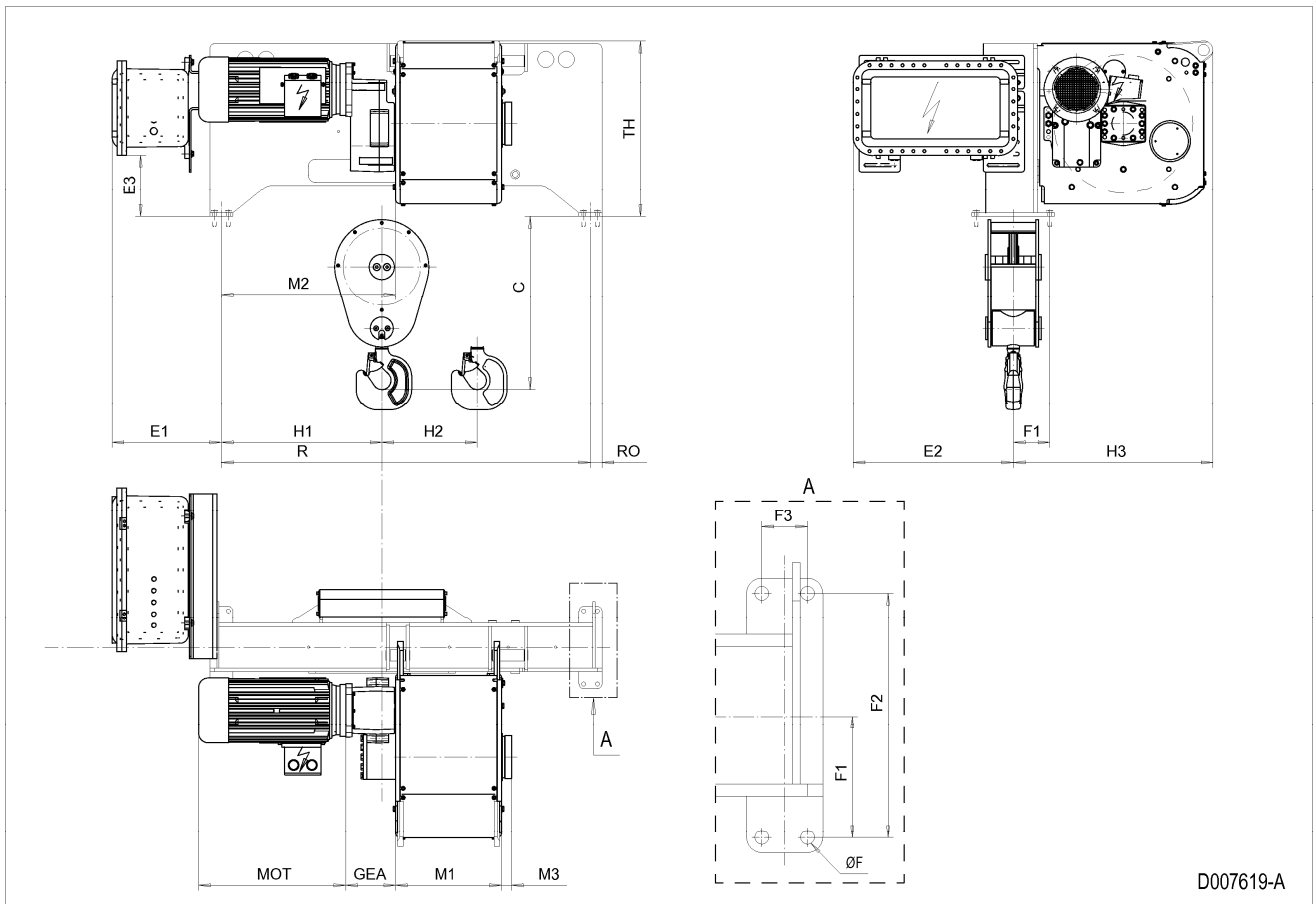


Fixed Hoist EXSX6, REEVING: 021; Class I, Division 2



D007619-A

HOL m	HOL* m	Length code	R mm	M1 mm	M2 mm	H1 mm	H2 mm	Weight** kg
15.5	10	C	1610	462	760	700	139	1600
21	15.5	D	1610	562	760	700	188	1600
28	22.5	E	1840	682	710	650	251	1700
36	30.5	F	1840	832	710	650	322	1800
47	41.5	G	2350	1022	790	730	421	1900
61	55.5	H	2350	1272	790	730	546	2000
80.5	75	J	2669	1622	750	690	721	2300
97	91.5	K	2669	1922	750	690	868	2400

*HOL with drum brake

**Presence of a drum brake increases weight by 80 kgs.

Motor dimensions

Motor	P6
MOT (mm)	536
Weight (kg)	86

Trolley dimensions

C	ØF	E1	E2	E3	F1	F2	F3	GEA	H3	M3	RO
754	18	476.6	698.6	269.1	158.5	320	60	218	871	44	50
TH											
768											

D007619_A

252824

Note: Weight calculated with P6 motor.

Note: All dimensions in mm.