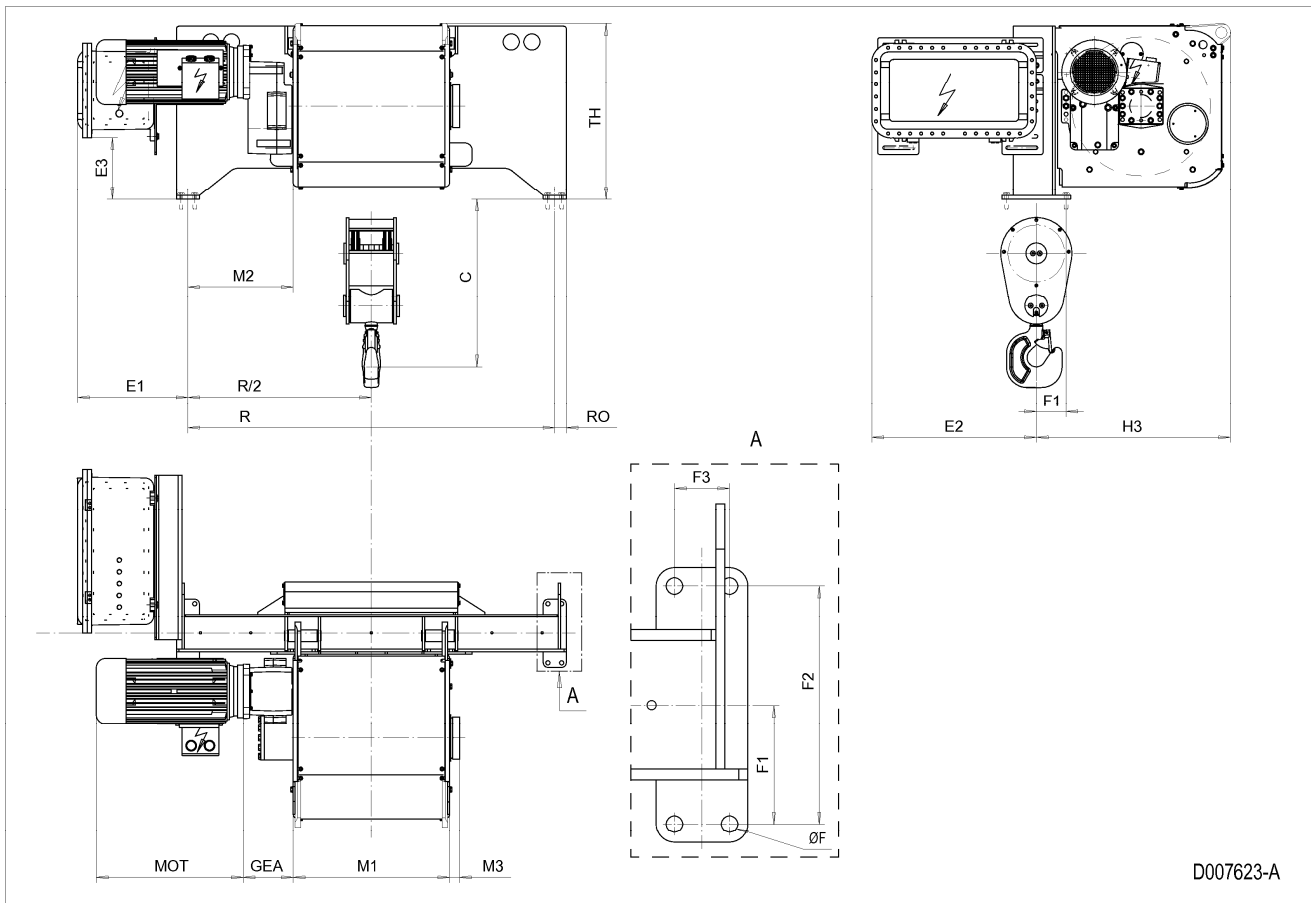


Fixed Hoist SX6EX , REEVING: 022; Class I, Division 2



D007623-A

HOL m	HOL* m	Length code	R mm	M1 mm	M2 mm	Weight** kg
15	8.5	E	1600	682	459	1400
21	14.5	F	1600	832	384	1400
28.5	22	G	1600	1022	289	1500
38	31.5	H	2200	1272	464	1700
51.5	45	J	2200	1622	289	1800
63.5	57	K	2240	1922	164	1900
77	70.5	L	2240	2272	-10	2100
87	80.5	M	2790	2522	139	2300
98.5	92	N	2790	2822	-10	2400

\*HOL with drum brake

\*\*Presence of a drum brake increases weight by 80 kgs.

Motor dimensions

Motor	P6
MOT (mm)	536
Weight (kg)	86

Trolley dimensions

C	ØF	E1	E2	E3	F1	F2	F3	GEA	H3	M3	RO
731	18	481.6	717.6	269.1	129.5	260	60	218	847	44	50
TH											
768											

D007623\_A  
252832

Note: Weight calculated with P6 motor.

Note: All dimensions in mm.