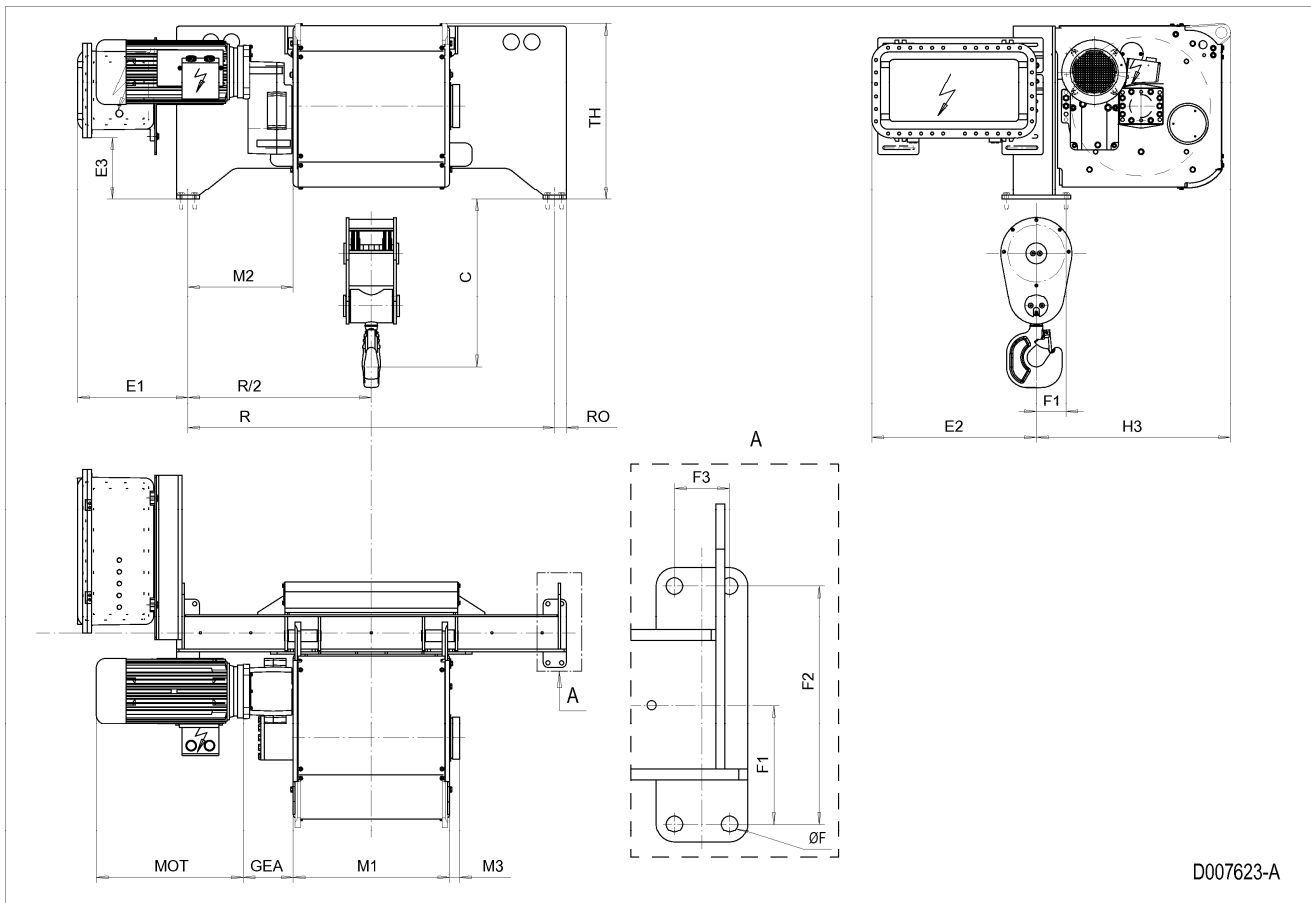


Fixed Hoist SX6EX , REEVING: 022; Class I, Division 2



D007623-A

HOL ft	HOL* ft	Length code	R inch	M1 inch	M2 inch	Weight** lb
49'-3"	27'-11"	E	62.99	26.85	18.07	3087
68'-11"	47'-7"	F	62.99	32.76	15.12	3087
93'-6"	72'-2"	G	62.99	40.24	11.38	3308
124'-8"	103'-4"	H	86.61	50.08	18.27	3749
168'-12"	147'-8"	J	86.61	63.86	11.38	3969
208'-4"	187'-0"	K	88.19	75.67	6.46	4190
252'-7"	231'-4"	L	88.19	89.45	-0.39	4631
285'-5"	264'-1"	M	109.84	99.29	5.47	5072
323'-2"	301'-10"	N	109.84	111.1	-0.39	5292

*HOL with drum brake

**Presence of a drum brake increases weight by 176 lbs.

Motor dimensions

Motor	P6
MOT (inch)	21.1
Weight (lb)	190

Trolley dimensions

C	ØF	E1	E2	E3	F1	F2	F3	GEA	H3	M3	RO
28.78	0.71	18.96	28.25	10.59	5.1	10.24	2.36	8.58	33.35	1.73	1.97
TH											
30.24											

D007623_A
252832

Note: Weight calculated with P6 motor.

Note: All dimensions in inch.