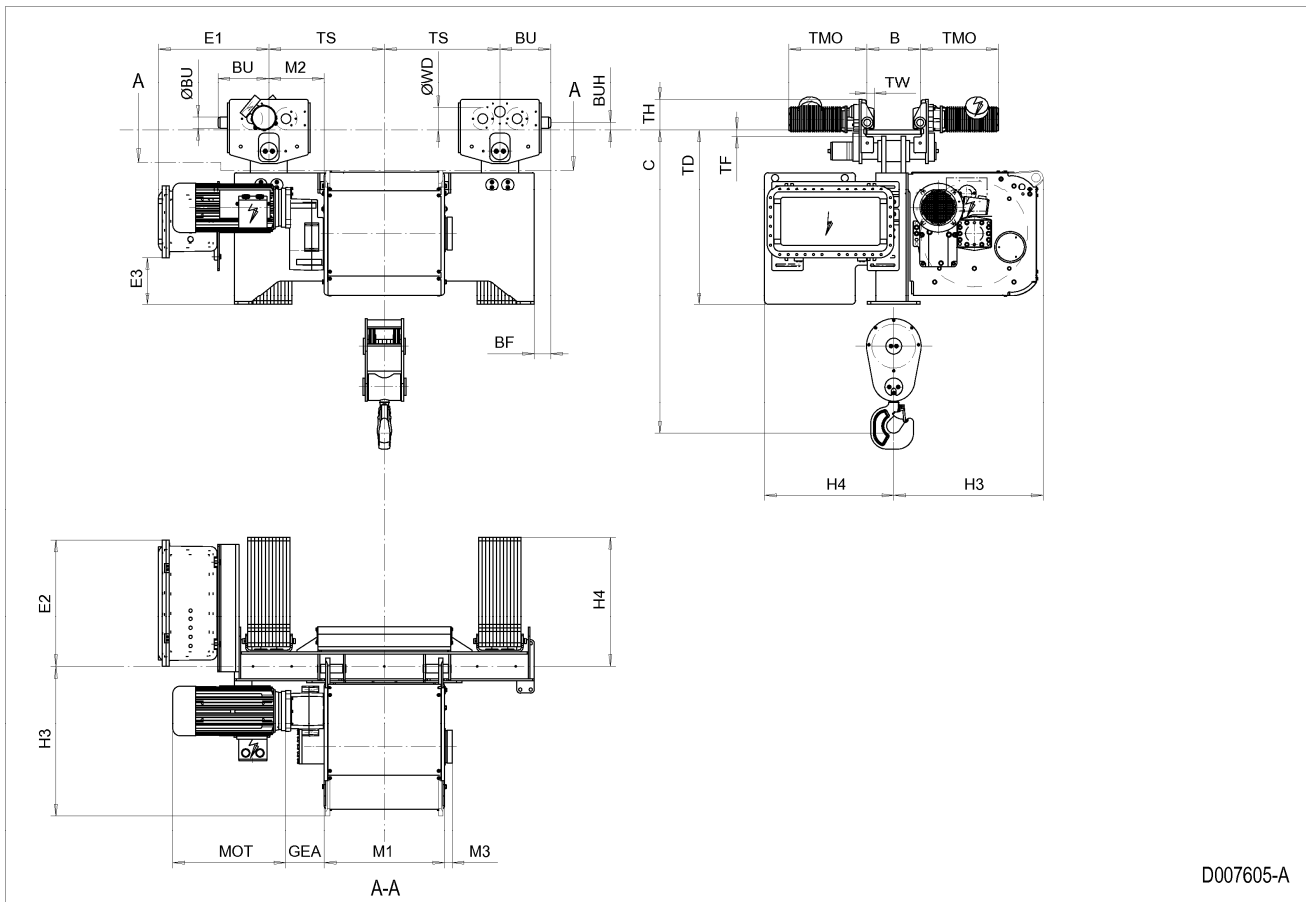


Normal Headroom Hoist EXSX6, REEVING: 022; Class I, Division 2



D007605-A

HOL ft	HOL* ft	Length code	E1 inch	M1 inch	M2 inch	H3 inch	H4 inch	TS inch	BF inch	Weight** lb
49'-3"	27'-11"	E	29.17	26.85	12.36	33.35	28.84	25.79	3.66	5072
68'-11"	47'-7"	F	29.17	32.76	9.41	33.35	28.84	25.79	3.66	5292
93'-6"	72'-2"	G	29.17	40.24	5.67	33.35	28.84	25.79	3.66	5513
124'-8"	103'-4"	H	29.17	50.08	12.56	33.35	28.84	37.6	3.66	5954
168'-12"	147'-8"	J	29.17	63.86	5.67	33.35	28.84	37.6	3.66	6615
208'-4"	187'-0"	K	41.77	75.67	-12.05	33.35	28.84	25.79	-8.94	7277
252'-7"	231'-4"	L	41.77	89.45	-18.94	33.35	28.84	25.79	-8.94	7718
285'-5"	264'-1"	M	40.79	99.29	-12.05	33.35	28.84	37.6	-7.95	8379
323'-2"	301'-10"	N	40.79	111.1	-17.95	33.35	28.84	37.6	-7.95	9041

*HOL with drum brake

**Presence of a drum brake increases weight by 176 lbs.

Motor dimensions

Motor	P6
MOT (inch)	21.1
Weight (lb)	190

Traveling dimensions

Motor	MF06LA
TMO (inch)	15.67
Weight (lb)	17

Trolley dimensions

B min	B max	C	ØWD	ØBU	BU	BUH	E1	E2	E3	GEA	M3
4.72	24.02	65.63	4.92	2.48	11.34	1.57	24.67	28.23	10.59	8.58	1.73
TD	TF	TH	TW								
39.29	1.38	6.69	1.63								

D007605_A
252561

Note: Weight calculated with P6 and MF06LA motors when B=11.8 inch.

Note: All dimensions in inch.