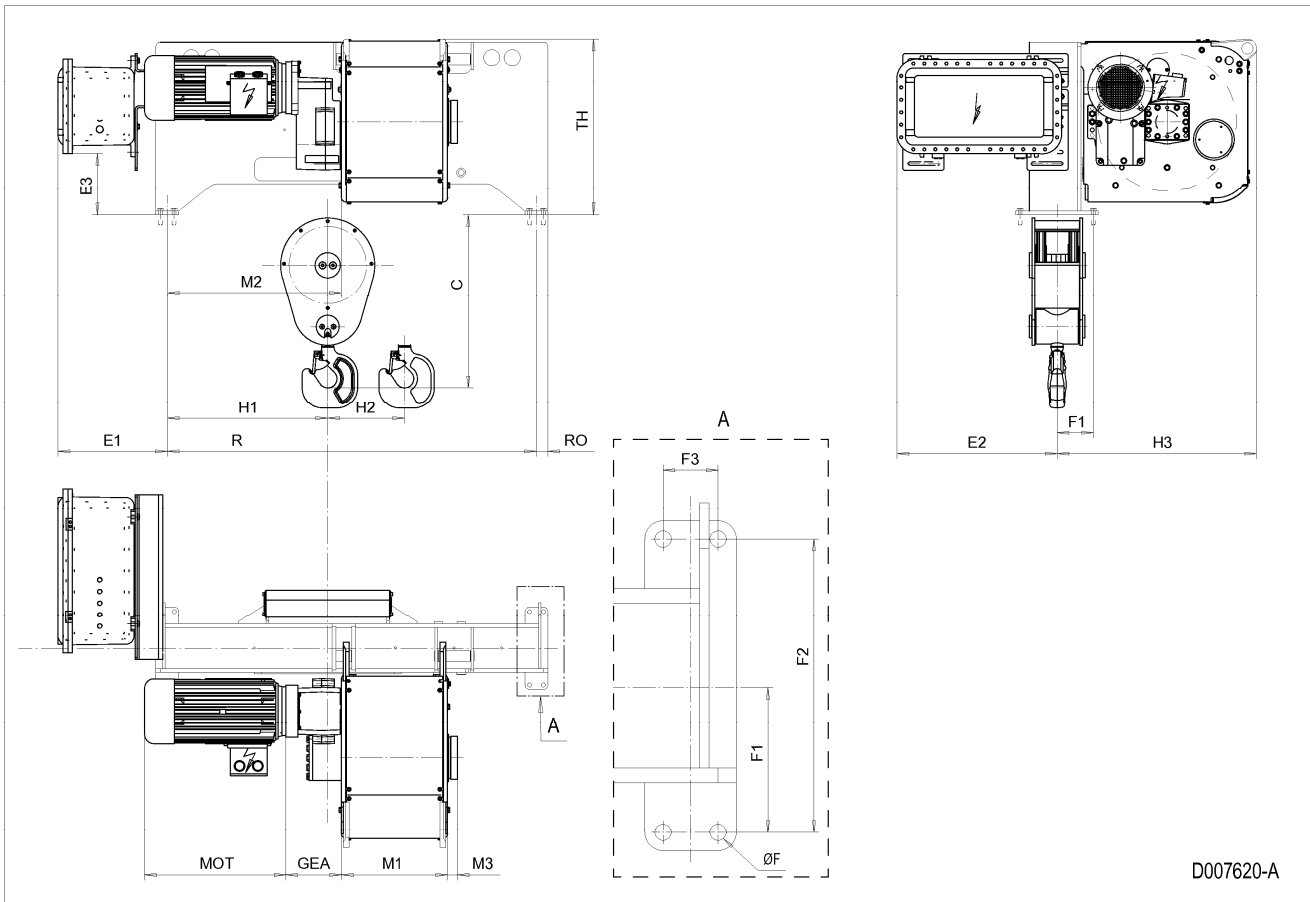


Fixed Hoist EXSX6, REEVING: 041; Class I, Division 2



D007620-A

HOL ft	HOL* ft	Length code	R inch	M1 inch	M2 inch	H1 inch	H2 inch	Weight** lb
24'-7"	14'-9"	C	63.39	18.19	29.92	27.56	2.72	3528
34'-5"	24'-7"	D	63.39	22.13	29.92	27.56	3.7	3749
45'-11"	36'-1"	E	72.44	26.85	27.95	25.59	4.92	3749
59'-1"	49'-3"	F	72.44	32.76	27.95	25.59	6.34	3969
77'-1"	67'-3"	G	92.52	40.24	31.1	28.74	8.27	4190
100'-1"	90'-3"	H	92.52	50.08	31.1	28.74	10.75	4410
131'-3"	121'-5"	J	105.08	63.86	29.53	27.17	14.17	5072
159'-1"	149'-3"	K	105.08	75.67	29.53	27.17	17.09	5292

\*HOL with drum brake

\*\*Presence of a drum brake increases weight by 176 lbs.

Motor dimensions

Motor	P6
MOT (inch)	21.1
Weight ( lb)	190

Trolley dimensions

C	ØF	E1	E2	E3	F1	F2	F3	GEA	H3	M3	RO
29.69	0.71	18.76	27.5	10.59	6.24	12.6	2.36	8.58	34.29	1.73	1.97
TH											
30.24											

D007620\_A

252829

Note: Weight calculated with P6 motor.

Note: All dimensions in inch.