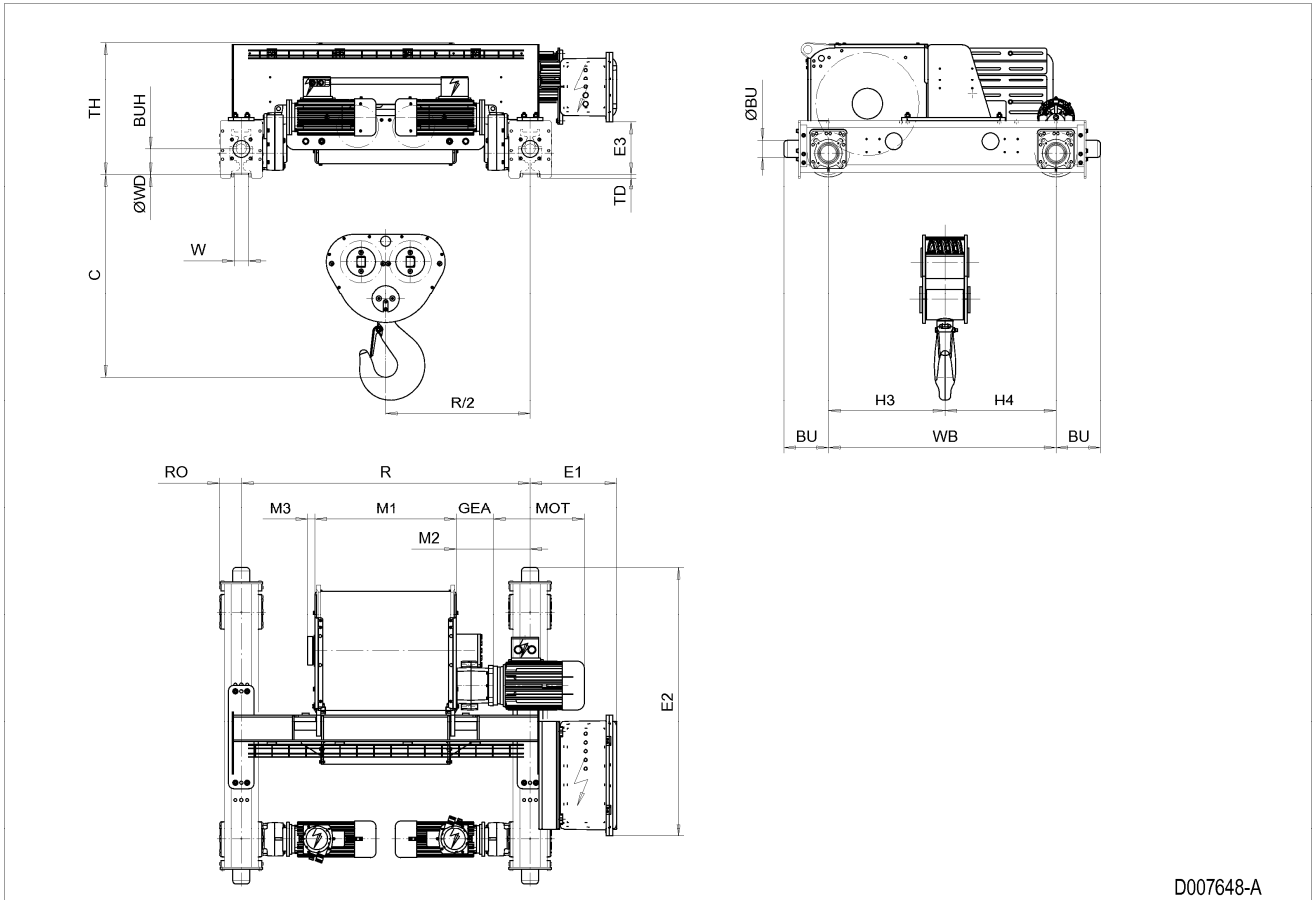


Double Girder Hoist EXSX6, REEVING: 082; Class I, Division 2



D007648-A

HOL m	HOL* m	Length code	M1 mm	M2 mm	Min R mm	Max R mm	Weight** kg
5	N/A	F	832	434	1700	2400	2560
7	5.5	G	1022	339	1700	2700	2630
9.5	8	H	1272	364	2000	3100	2760
12.5	11	J	1622	389	2400	3400	2930
15.5	14	K	1922	389	2700	3800	3110
19	17.5	L	2272	414	3100	4200	3330
21.5	20	M	2522	439	3400	4200	3490
24.5	23	N	2822	489	3800	4200	3710

*HOL with drum brake

**Presence of a drum brake increases weight by 80 kgs.

Motor Dimensions

Motor	P6
MOT (mm)	536
Weight (kg)	86

Traveling dimensions

Motor	MF07X
Weight (kg)	13.5

Trolley Dimensions

C	ØWD	ØBU	BU	BUH	E1	E2	E3	GEA	H3	H4	M3
1195	250	100	262	150	509.8	1584.7	308.1	218	687	653	44
RO	TD	TH	WB	W min	W max						
130	20	777	1340	54	99						

D007648_A
252892

Note: All dimensions in mm.

Note: Weight calculated with P6 and MF07X motors.

Note: Standard rail gauges: 1700, 2000, 2400, 2700, 3100, 3400, 3800 and 4200.

Note: M2 and weight calculated with Min R.

Note: Flangeless wheels available.