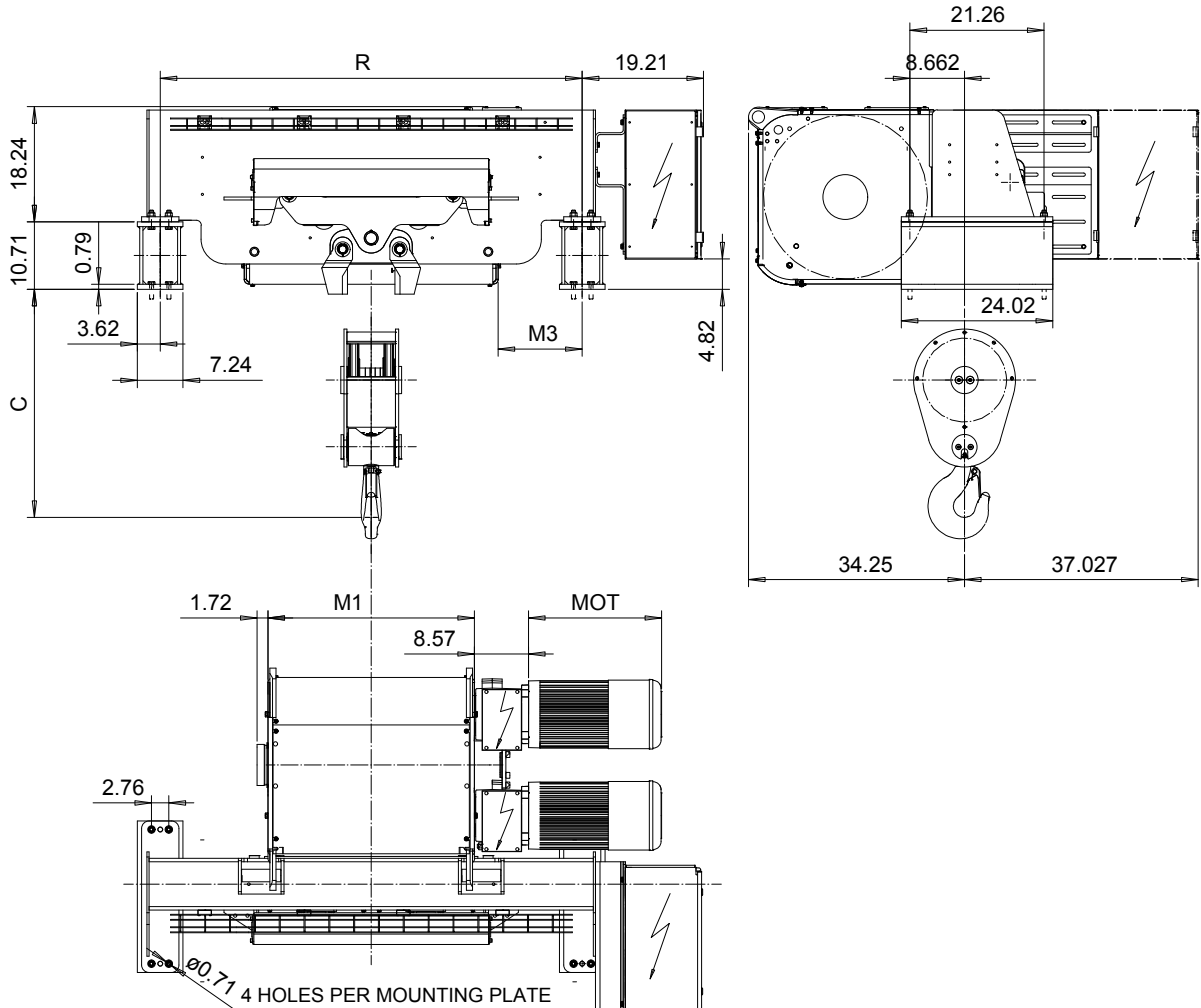


# FOOT MOUNT, 2 PART DOUBLE

Hoist type:

SX7 022...F0

US-60Hz



HOL (ft)	HOL* (ft)	Length code	R (inch)	M1 (inch)	M3 (inch)	Approx Weight (lb)
50'-10"	29'-6"	F	66.93	32.76	17.09	3087
67'-6"	45'-11"	G	66.93	40.24	13.35	3307
90'-2"	68'-11"	H	94.5	50.07	22.2	3528
123'-0"	101'-8"	J	94.5	63.85	15.3	3969
150'-11"	129'-7"	K	122.05	75.66	13.3	4410
182'-5"	160'-9"	L	122.06	89.44	16.3	4851
205'-0"	183'-9"	M	149.61	99.29	33.1	5292
232'-11"	211'-7"	N	149.61	111.10	27.2	5732

HOL\* with optional drum brake Weight of drum brake is 176 lb.

Motor	P6	P7	P8	A7	S7	S8	SA
MOT (in)	21.1	22.7	28	21.1	28.1	30	31.6
Weight (lb)	187	231	234	157	179	214	265

Load (TON)	Class ASME
12 1/2	H4+
15	H4
20	H3

Headroom - C dimension	
Standard	36.2"
with HS22 Hook operated limit switch	38.2"

Hoist weight calculated with P6 motor weight and without drum brake.

This document is the absolute property of R&M Materials Handling, Inc. This document must not be copied without the written permission of R&M Materials Handling, Inc. The contents thereof must not be disclosed to a third party nor be used for any unauthorized purpose. Contravention will be prosecuted.

ETTPAL Design	ETTPAL Chd	Appd	Ref Drawing	QE-F-22
2003-01-13 Date	HOIST; FIXED			
SLEODOCV Owner Dept	2X2 ROPE FALLS			
R&M MATERIALS HANDLING INC.	R&M MATERIALS HANDLING INC. HOIST & CRANE PRODUCTS SPRINGFIELD, OHIO	D006944-A		1:13 Folder
				Issue 1/2018