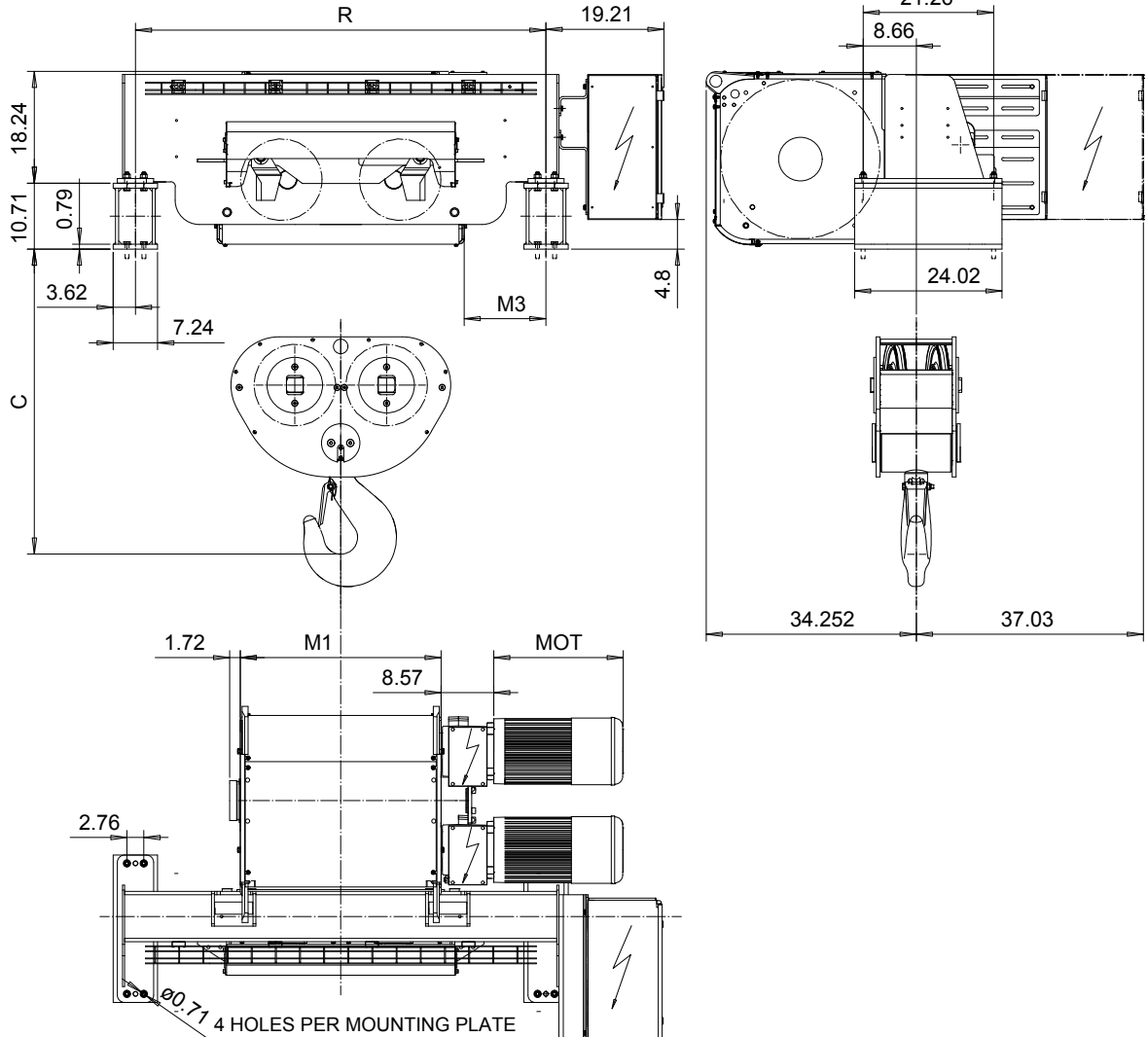


FOOT MOUNT, 4 PART DOUBLE

Hoist type:

SX7 042...F0

US-60Hz



HOL (ft)	HOL* (ft)	Length code	R (inch)	M1 (inch)	M3 (inch)	Approx Weight (lb)
24'-6"	13'-1"	F	66.93	32.76	17.09	3307
32'-9"	21'-4"	G	66.93	40.24	13.35	3307
44'-3"	32'-10"	H	94.5	50.07	22.2	3748
60'-8"	49'-3"	J	94.5	63.85	15.3	3968
75'-5"	64'-0"	K	122.05	75.66	13.3	4630
90'-2"	78'-9"	L	122.06	89.44	16.3	4850
101'-8"	90'-3"	M	149.61	99.29	33.1	5512
116'-5"	105'-0"	N	149.61	111.10	27.2	5732

HOL* with optional drum brake Weight of drum brake is 176 lb.

Motor	P6	P7	P8	A7	S7	S8	SA
MOT (in)	21.1	22.7	28	21.1	28.1	30	31.6
Weight (lb)	187	231	234	157	179	214	265

Load (TON)	Class ASME
25	H4+
30	H4
40	H3

Headroom - C dimension	
Standard	49.8"
with HS22 Hook operated limit switch	51.8"

Hoist weight calculated with P6 motor weight and without drum brake.

This document is the absolute property of R&M Materials Handling, Inc. This document must not be copied without the written permission of R&M Materials Handling, Inc. The contents thereof must not be disclosed to a third party nor be used for any unauthorized purpose. Contravention will be prosecuted.

ETTPAL Design	ETTPAL Chd	Appd	Ref Drawing	QE-F-24
2003-01-13 Date	HOIST; FIXED			
SLEODOCV Owner Dept	2X4 ROPE FALLS			
R&M MATERIALS HANDLING INC.	D006945-A			
R&M MATERIALS HANDLING INC. HOIST & CRANE PRODUCTS SPRINGFIELD, OHIO	1/13 Folder			
	Issue 1/2018			