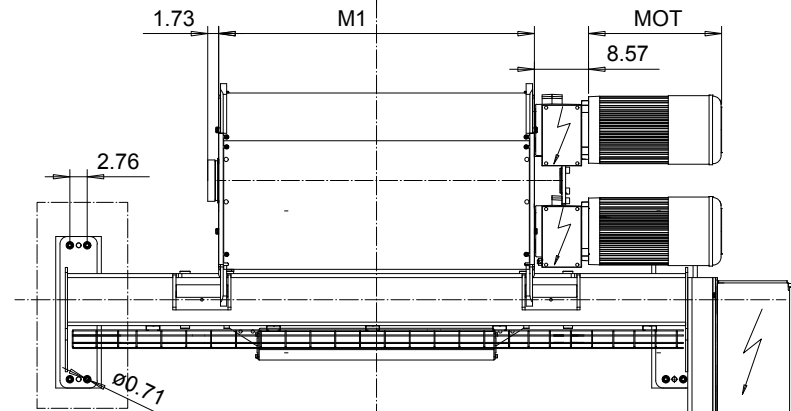
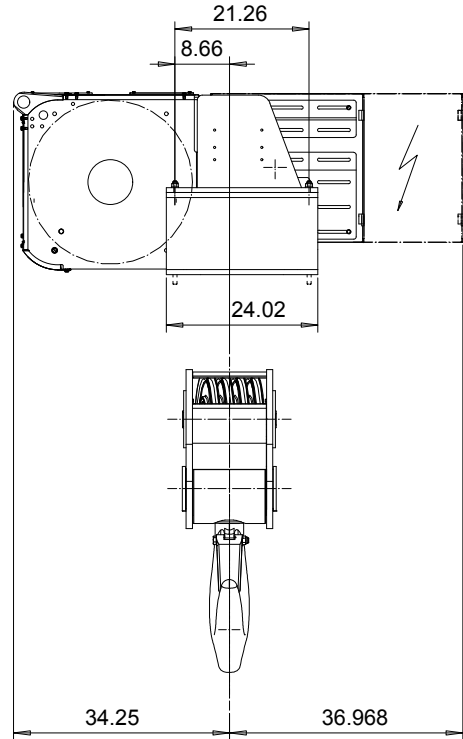
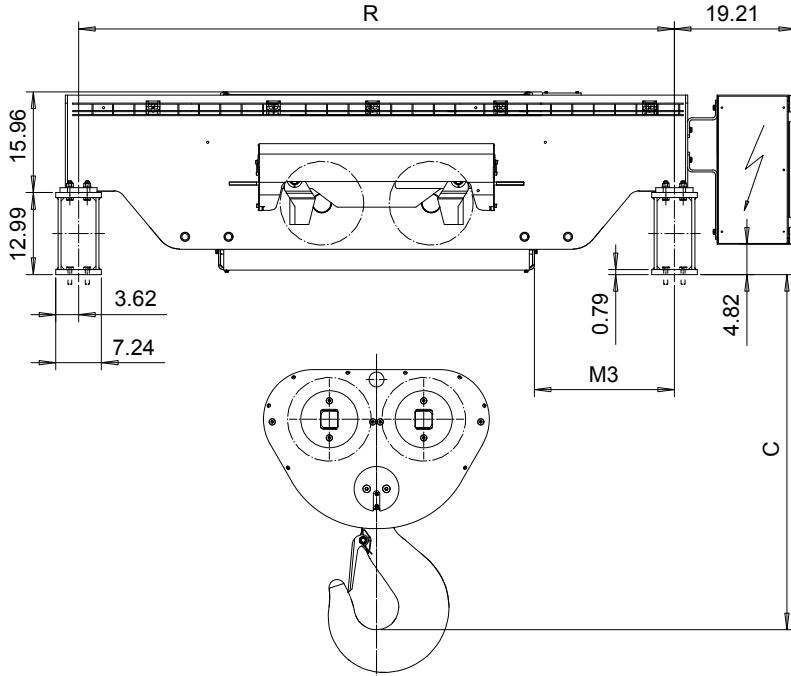


FOOT MOUNT, 8 PART DOUBLE

Hoist type:

SX7 082...F0

US-60Hz



4 HOLES PER MOUNTING PLATE

HOL (ft)	HOL* (ft)	Length code	R (inch)	M1 (inch)	M3 (inch)	Approx Weight (lb)
21'-3"	14'-9"	H	94.5	50.07	22.2	4410
29'-6"	23'-0"	J	94.5	63.85	15.3	4851
36'-1"	29'-6"	K	122.05	75.66	13.3	5733
44'-3"	37'-9"	L	122.06	89.44	16.3	5954
50'-10"	44'-3"	M	149.61	99.29	33.1	6836
57'-4"	50'-10"	N	149.61	111.10	27.2	7056

HOL* with optional drum brake Weight of drum brake is 176 lb.

Motor	P6	P7	P8	A7	S7	S8	SA
MOT (in)	21.1	22.7	28	21.1	28.1	30	31.6
Weight (lb)	187	231	234	157	179	214	265

Load (TON)	Class ASME
60	H4
80	H3

Headroom - C dimension	
Standard	56.3"
with HS22 Hook operated limit switch	58.3"

Hoist weight calculated with P6 motor weight and without drum brake.

This document is the absolute property of R&M Materials Handling, Inc. This document must not be copied without the written permission of R&M Materials Handling, Inc. The contents thereof must not be disclosed to a third party nor be used for any unauthorized purpose. Contravention will be prosecuted.

ETTPAL Design 2003-01-13 Date	ETTPAL Chd Appd Ref Drawing	QE-F-28
SLEODOCV Owner Dept	HOIST; FIXED 2X8 ROPE FALLS	1:13 Folder
R&M MATERIALS HANDLING INC.	R&M MATERIALS HANDLING INC. HOIST & CRANE PRODUCTS SPRINGFIELD, OHIO	D006947-A Issue 1/2018