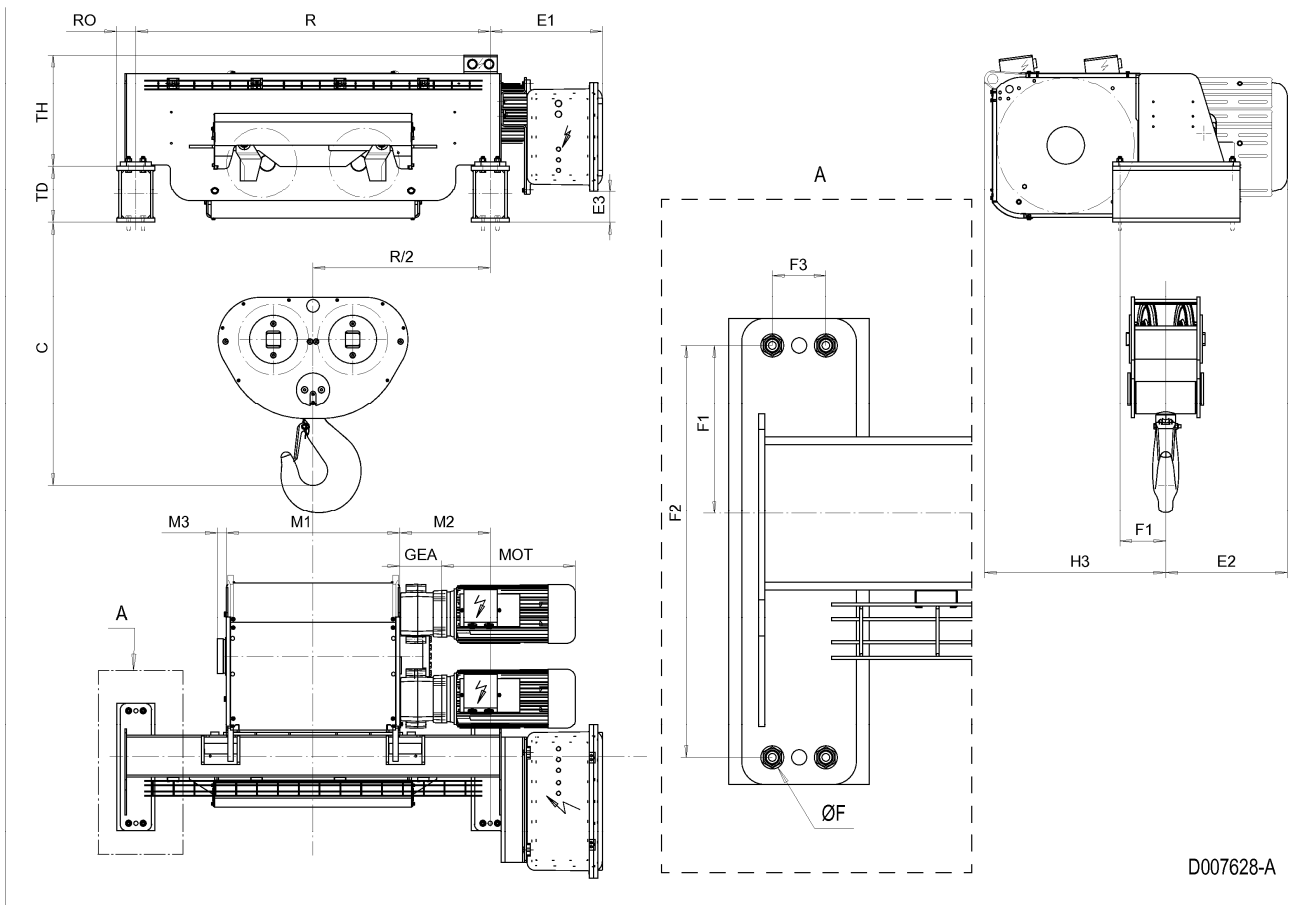


Fixed Hoist EXSX7, REEVING: 042; Class I, Division 2



D007628-A

HOL ft	HOL* ft	Length code	R inch	M1 inch	M2 inch	Weight** lb
24'-7"	13'-1"	F	66.93	32.76	17.09	4079
32'-10"	21'-4"	G	66.93	40.24	13.35	4079
44'-3"	32'-10"	H	94.49	50.08	22.24	4520
60'-8"	49'-3"	J	94.49	63.86	15.31	4741
75'-6"	63'-12"	K	122.05	75.67	13.35	5402
90'-3"	78'-9"	L	122.05	89.45	16.3	5623
101'-8"	90'-3"	M	149.61	99.29	33.07	6284
116'-6"	104'-12"	N	149.61	111.1	27.17	6505

*HOL with drum brake

**Presence of a drum brake increases weight by 176 lbs.

Motor dimensions

Motor	P6
MOT (inch)	21.1
Weight (lb)	190

Trolley dimensions

C	ØF	E1	E2	E3	F1	F2	F3	GEA	H3	M3	RO
49.72	0.71	21.19	22.97	5.81	8.66	21.26	2.76	7.91	34.29	1.73	3.62
TD	TH										
10.71	21.14										

D007628_A

252838

Note: Weight calculated with P6 motor.

Note: All dimensions in inch.