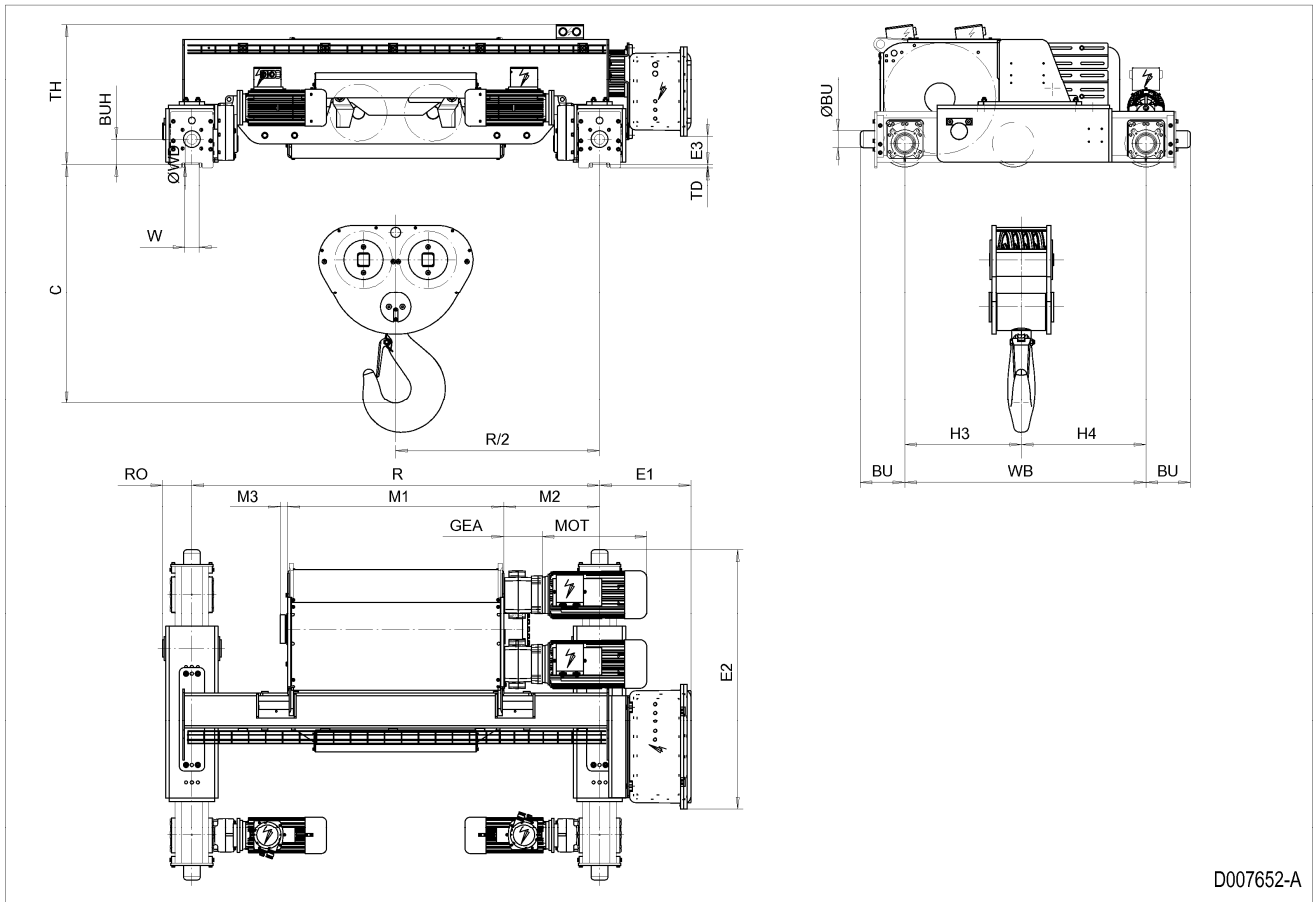


Double Girder Hoist EXSX7, REEVING: 082; Class I, Division 2



D007652-A

HOL m	HOL* m	Length code	M1 mm	M2 mm	Min R mm	Max R mm	Weight** kg
6.5	4.5	H	1272	564	2400	3100	3830
9	7	J	1622	389	2400	3400	3970
11	9	K	1922	389	2700	3800	4220
13.5	11.5	L	2272	414	3100	4200	4500
15.5	13.5	M	2522	439	3400	4200	4700
17.5	15.5	N	2822	489	3800	4200	4960

\*HOL with drum brake

\*\*Presence of a drum brake increases weight by 80 kgs.

Motor Dimensions

Motor	P6
MOT (mm)	536
Weight (kg)	86

Traveling Dimensions

Motor	MF10M
Weight (kg)	26

Trolley Dimensions

C	ØWD	ØBU	BU	BUH	E1	E2	E3	GEA	H3	H4	M3
1410	250	100	262	150	538.2	1525.7	167.7	201	687	733	44
RO	TD	TH	WB	W min	W max						
173	20	797	1420	54	99						

D007652\_A  
252897

Note: All dimensions in mm.

Note: Weight calculated with P6 and MF10M motors.

Note: Standard rail gauges: 2400, 2700, 3100, 3400, 3800 and 4200.

Note: M2 and weight calculated with Min R.

Note: Flangeless wheels available.