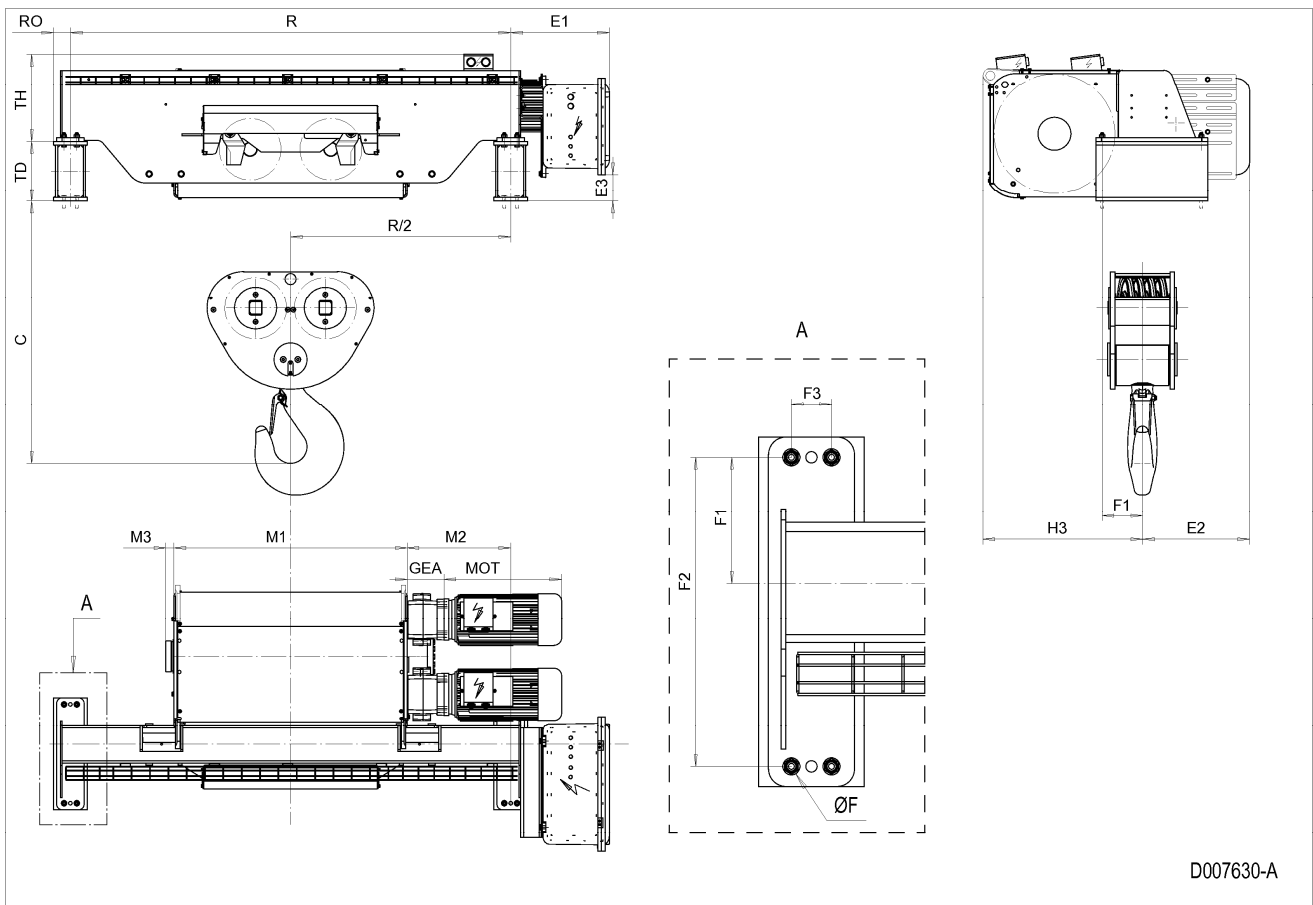


Fixed Hoist SXEX7, REEVING: 082; Class I, Division 2



D007630-A

HOL m	HOL* m	Length code	R mm	M1 mm	M2 mm	Weight** kg
6.5	4.5	H	2400	1272	565	2350
9	7	J	2400	1622	389	2550
11	9	K	3100	1922	339	2950
13.5	11.5	L	3100	2272	414	3050
15.5	13.5	M	3800	2522	840	3450
17.5	15.5	N	3800	2822	690	3550

*HOL with drum brake

**Presence of a drum brake increases weight by 80 kgs.

Motor dimensions

Motor	P6
MOT (mm)	536
Weight (kg)	86

Trolley dimensions

C	ØF	E1	E2	E3	F1	F2	F3	GEA	H3	M3	RO
1430	18	538.2	583.6	147.7	220	540	70	201	871	44	92
TD	TH										
330	479										

D007630_A
252841

Note: Weight calculated with P6 motor.

Note: All dimensions in mm.