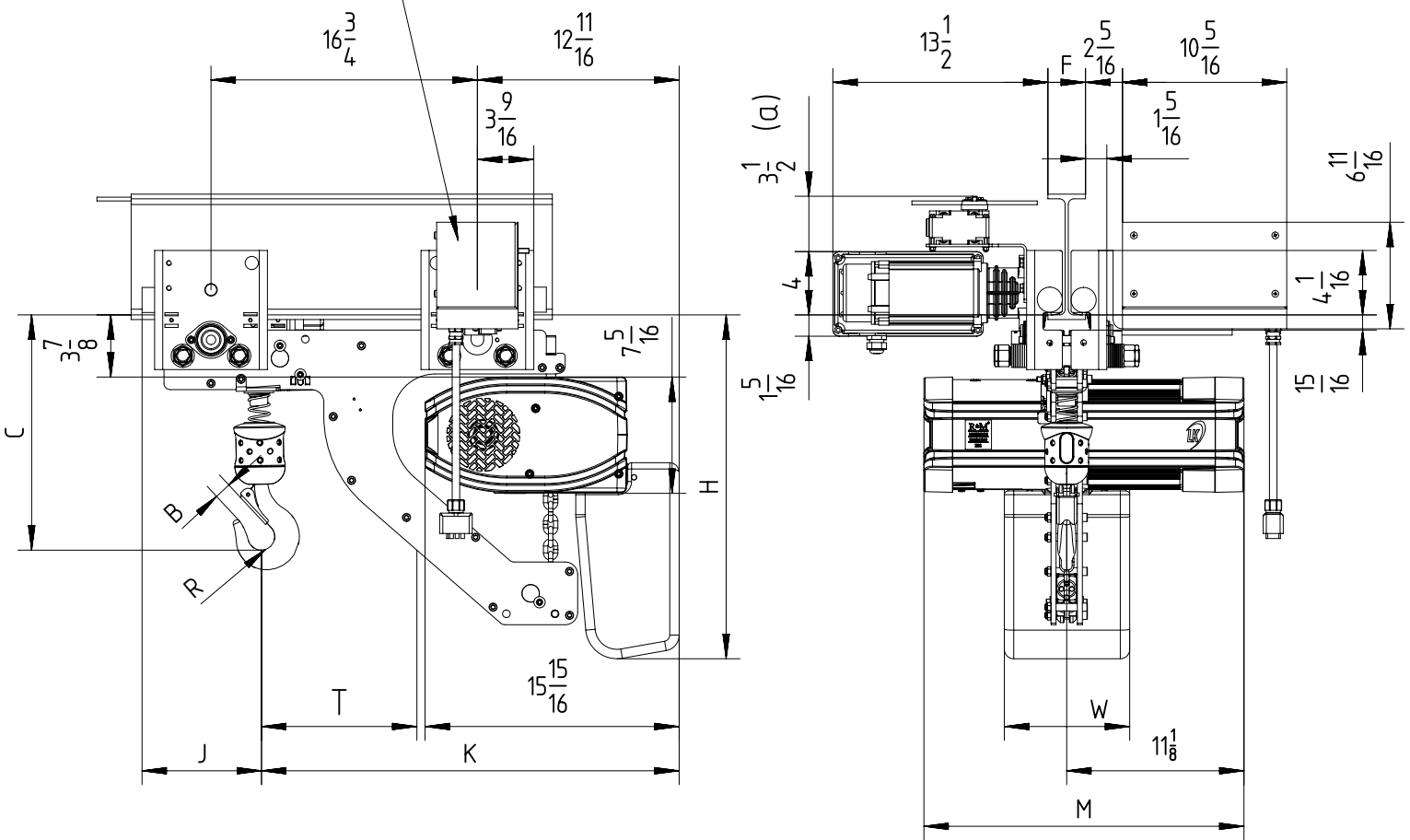


Fixed to electric travel trolley max 2 TON (perpendicular version)

(b) Auto-transformer



$$2\frac{11}{16} < F < 12\frac{3}{16}$$

(a) Note: Trolley limit switch is optional.

(b) If the voltage is less than 380V or more than 480V, the trolley motor needs an autotransformer as drawn.

| Chain Size (mm) | Max load (TON) | Falls | Chain bag capacity (ft) | Dimensions (inch) |        |        |         |       |        |        |       |         |        | Weight of chain (lb/ft) | Estimated weight of hoist incl. trolley w/o chain (lb) |     |     |
|-----------------|----------------|-------|-------------------------|-------------------|--------|--------|---------|-------|--------|--------|-------|---------|--------|-------------------------|--|-----|-----|
|                 |                |       |                         | B                 | C      | T      | R       | J     | K      | H      | W     | M       |        |                         | LK   | GLS | DB  |
|                 |                |       |                         |                   |        |        |         |       |        |        |       | LK      | DB/GLS |                         |  |     |     |
| 7X20            | 1              | 1     | 19                      | 1                 | 14 3/4 | 9 3/4  | 7 8     | 7 1/2 | 26 1/4 | 21 5/8 | 7 7/8 | 20 1/16 | 25 1/4 | 0.75                    | 225  | 229 | 245 |
|                 |                |       | 52                      |                   |        |        |         |       |        | 27 1/8 |       |         |        |                         |  |     |     |
|                 |                |       | 98                      |                   |        |        |         |       |        | 29 7/8 |       |         |        |                         |  |     |     |
|                 | 2              | 2     | 19 (*)                  | 1 1/4             | 17 1/2 | 11 5/8 | 15 1/16 | 8 3/5 | 25     | 21 5/8 | 7 7/8 | 20 1/16 | 25 1/4 | 0.75                    | 234  | 238 | 254 |
|                 |                |       | 52 (*)                  |                   |        |        |         |       |        | 27 1/8 |       |         |        |                         |  |     |     |
|                 |                |       | 98 (*)                  |                   |        |        |         |       |        | 29 7/8 |       |         |        |                         |  |     |     |

GLS: Gear Limit Switch  
DB: Double Brake

(\*) In case of 2-fall hoist, available lifting height is half of the chain bag maximum capacity