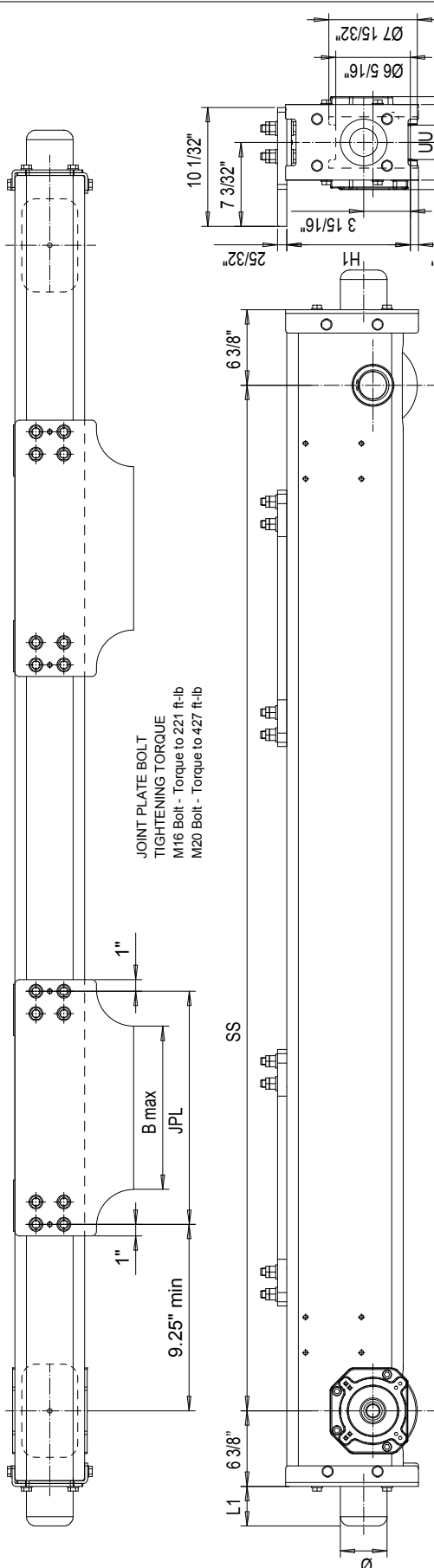


RTN16 END TRUCK TOP JOINT PLATE TYPE B



JOINT PLATE BOLT
TIGHTENING TORQUE
M16 Bolt - Torque to 221 ft-lb
M20 Bolt - Torque to 427 ft-lb

Product Code example
RTN16-2574-B40700C0000-N

- N=standard, E=Special
- primer paint, color code (not in use)
- Buffer type
- Joint plate distance (pin to pin, with double DG girder)
- (driving wheel to pin with asymmetrical single SG girder)
- Joint plate code
- =1WD, D =2WD (Number of driving wheels/end carriage)
- Wheel groove = UU
- Wheel base = SS
- =std, C=asymmetrical joint
- Type of end carriage

Joint plate	Min. Wheelbase Trolley Gage=47.25"	JPL	B max
B4	8'-2 7/16", DG	19 11/16"	13 3/4"
B6	8'-2 7/16", DG	27 9/16"	21 11/16"

The wheel loads listed are only a guideline. The max. wheel load listed is based on the structural integrity of the frame and load placement, and it does not take into account permissible wheel loading or bearing life. SG load placement is at the center, and DG load placement is for a trolley gage of 1400 mm [55 1/8"].

The permissible dynamic wheel load listed is based on assumptions that the bridge speed is 40 m/min [130 rpm], end truck duty is Fem 2m, and the runway rail as listed.

The actual wheel load should not exceed the permissible wheel load. If the permissible dynamic wheel load is greater than the maximum dyn wheel load, then the actual wheel load cannot exceed maximum dyn wheel load.

Dyn wheel load = 1.15 x Static wheel load

UU = 2 1/8" - 3 5/16"

Buffer type	L1	Ø
B	2 11/16"	3 3/16"
C	3 5/16"	3 15/16"
D	4 1/8"	4 15/16"
K	3 3/16"	3 3/16"
G	3 15/16"	3 15/16"
E	5 15/16"	3 15/16"
M	4 15/16"	4 15/16"
F	7 1/2"	4 15/16"
H	6 15/16"+3 15/16"	6 5/16"
P	9 7/16"+3 15/16"	6 5/16"
K, G, E, M, F, H, P polyurethane		

Wheelbase code	SS	H1	Max dyn whl load, (kip)			Perm dyn whl load, (kip)			Approx Wgt / trk (lb)		
			SG	DG	ASCE 40	ASCE 60	ASCE 85	SG	DG	DG	
16	5'-3"	10 7/16"	18	18	11.25	15.3	16.9	415	479	479	
20	6'-6 3/4"	10 7/16"	18	18	11.25	15.3	16.9	466	530	530	
25	8'-2 7/16"	10 7/16"	18	18	11.25	15.3	16.9	528	592	592	
32; DG	10'-4"	10 7/16"	-	18	11.25	15.3	16.9	-	671	671	
32; SG	10'-4"	12 7/16"	18	-	11.25	15.3	16.9	669	-	-	
40	13'-1 1/2"	12 7/16"	14.18	15.53	11.25	15.3	16.9	791	855	855	
45	14'-9 3/16"	12 7/16"	9.9	10.8	11.25	15.3	16.9	862	926	926	

EITVPH	EITVPH
2008-10-14	END TRUCK
SLEDDOCV	OUTLINE DRAWING
R&M MATERIALS HANDLING INC.	RTN16-B
FOR DETAILS CONTACT R&M MATERIALS HANDLING INC. SPRINGFIELD, ILL.	RTN16 END TRUCK TOP JOINT
1-6	ECH16
	03/2012