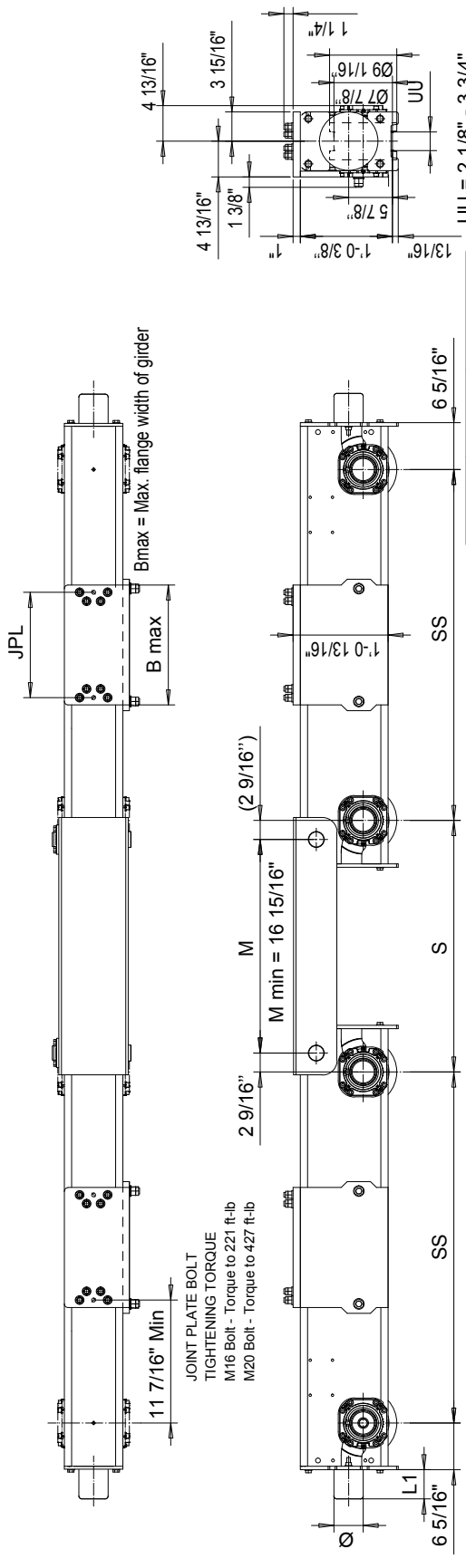


RTN20B END TRUCK SIDE JOINT PLATE TYPE R

This document is the absolute property of R&M Materials Handling, Inc. This document must not be copied without the written permission of R&M Materials Handling, Inc. The contents thereof must not be disclosed to a third party nor be used for any unauthorized purpose. Contravention will be prosecuted.



Bmax = Max. flange width of girder

UU = 2 1/8" - 3 3/4"

(Product Code example)
RTN20B1274-R31540C0860-N

- N=standard, E=Special
- primer paint, color code
- Inner wheel distance =S
- Buffer type
- Joint plate distance =PP,
(pin to pin, with double girder)
- Joint plate code
- =1W/D, D =ZWD
- Wheel groove =UU
- Wheel base =SS
- B =bogie
- Type of end carriage

The wheel loads listed are only a guideline. The max. wheel load listed is based on the structural integrity of the frame and load placement, and it does not take into account permissible wheel loading or bearing life. SG load placement is at the center, and DG load placement is for a trolley gage of 1400 mm [55 1/8"].
The permissible dynamic wheel load listed is based on assumptions that the bridge speed is 40 m/min [130 fpm], and truck duty is Fcm 2m, and the runway rail as listed.
The actual wheel load should not exceed the permissible wheel load. If the permissible dynamic wheel load is greater than the maximum dyn wheel load, then the actual wheel load cannot exceed maximum dyn wheel load.
Dyn wheel load = 1.15 x static wheel load

Buffer type	L1	Ø
A	2 3/16"	2 1/2"
B	2 11/16"	3 3/16"
C	3 5/16"	3 15/16"
D	4 1/8"	4 15/16"
K	3 3/16"	3 3/16"
G	3 15/16"	3 15/16"
E	5 15/16"	3 15/16"
F	7 1/2"	4 15/16"
H	6 5/16"	6 5/16"
I	7 7/8"	7 7/8"
M	4 15/16"	4 15/16"
P	9 7/16"	6 5/16"
S	11 13/16"	7 7/8"

B, C, D rubber
K, G, E, F, H, I, M, P, S polyurethane

Joint plate	JPL	B max
R3	9.84"	11 13/16"
R4	14.17"	16 1/8"
R5	18.5"	20 1/2"
R6	22.83"	24 13/16"

Wheel base Code	SS	Max dyn whl load (kip)	Permissible dyn whl load, (kip)	ASCE 40	ASCE 60	ASCE 85	Approx. Weight (lb)
12	3'-11 1/4"	29.7	14.8	19.8	22	22	1034
14	4'-7 1/8"	29.7	14.8	19.8	22	22	1098
16	5'-3"	29.7	14.8	19.8	22	22	1162
18	5'-10 7/8"	29.7	14.8	19.8	22	22	1226
20	6'-6 3/4"	29.7	14.8	19.8	22	22	1290

Rev	Description	Specification	Std	Drawing
RTN20BPH	RTN20BPH	RTN20BPH		
Date/Rev	2008-05-23			
Phase				
Author				
Checker				
Designer				
Drawn				
Scale				
Proj. No.				
Proj. Name	END TRUCK OUTLINE DRAWING			
Proj. Code	RTN20B-R			
Proj. Title	RTN20B END TRUCK SIDE JOINT			

R&M MATERIALS HANDLING INC.
 2008-05-23
 RTN20BPH
 END TRUCK OUTLINE DRAWING
 RTN20B-R
 RTN20B END TRUCK SIDE JOINT
 08/2013