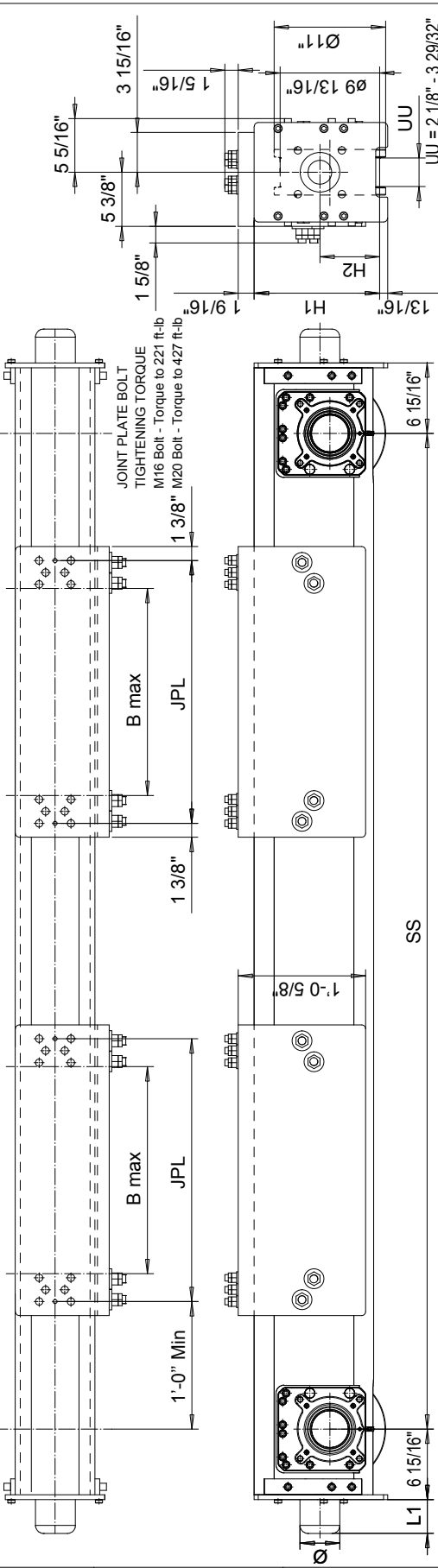


This document is the absolute property of R&M Materials Handling, Inc. This document must not be copied without the written permission of R&M Materials Handling, Inc. The contents thereof must not be disclosed to a third party nor be used for any unauthorized purpose. Contention will be prosecuted.

# RTN25 END TRUCK SIDE JOINT PLATE TYPE F



Wheelbase code	Max dyn whl load, (kip)		Perm dyn whl load, (kip)		Approx. Wt./Trk, lb		H1		H2	
	SG	DG	ASCE 60	ASCE 85	SG	DG	SG	DG	SG	DG
20	41.63	-	25.8	28.4	979	-	12 3/8"	5 15/16"	5 15/16"	-
25	38.48	41.63	25.8	28.4	1076	1316	12 3/8"	5 15/16"	5 15/16"	5 15/16"
32	38.25	41.63	25.8	28.4	1355	1595	12 3/8"	5 15/16"	5 15/16"	5 15/16"
40	35.55	41.63	25.8	28.4	1558	1798	16 3/8"	5 15/16"	5 15/16"	5 15/16"
45	28.8	31.28	25.8	28.4	1677	1917	16 3/8"	5 15/16"	5 15/16"	5 15/16"
50	31.05	40.95	25.8	28.4	2145	2386	16 9/16"	6 1/8"	6 1/8"	6 1/8"
55	28.13	30.38	25.8	28.4	2297	2538	16 9/16"	6 1/8"	6 1/8"	6 1/8"

Joint plate	JPL	B max	Min. Wheelbase
F4	18.9"	15 3/8"	Trolley gage = 47.25"
F5	25.98"	20 1/2"	8'-2 7/16"; DG
F7	35.04"	29 1/2"	8'-2 7/16"; DG
F8	40.55"	35"	10'-4"; DG

The wheel loads listed are only a guideline. The max. wheel load listed is based on the structural integrity of the frame and load placement, and it does not take into account permissible wheel loading or bearing life. SG load placement is at the center, and DG load placement is for a trolley gage of 1400 mm (55 1/8").  
 The permissible dynamic wheel load listed is based on assumptions that the bridge speed is 40 m/min (130 fpm), end truck duty is Fem 2m, and the runway rail as listed.  
 If permissible dynamic wheel load is greater than the maximum dyn wheel load, use maximum dyn wheel load to select the end truck.  
 Dyn wheel load = 1.15 x static wheel load

Product Code example  
**RTN25-2570-F50541C0000-N**

- N=standard, E=Special
- primer paint, color code
- (not in use with RTN25)
- Wheel type
- Joint plate distance (DG)
- Joint plate code
- = 1WD, D = 2WD (per truck)
- Wheel groove = UU
- Wheel base = SS
- std, C=asymmetrical joint
- Type of end carriage

Buffer type	L1	Ø
B	2 11/16"	3 3/16"
C	3 5/16"	3 15/16"
D	4 1/8"	4 15/16"
K	3 3/16"	3 3/16"
G	3 15/16"	3 15/16"
E	5 15/16"	3 15/16"
F	7 1/2"	4 15/16"
H	6 5/16"	6 5/16"
I	7 7/8"	7 7/8"
M	4 15/16"	4 15/16"
P	9 7/16"	6 5/16"
S	11 13/16"	7 7/8"

B, C, D rubber  
 K, G, E, F, H, I, M, P, S polyurethane

Pos	Description	Specification	Id	Drawing
ECTP P1.A	Design	ECTP P1.A		Ref Drawing
2008-08-11	Date	END TRUCK		
SLEPOCCV	Part	OUTLINE DRAWING		
R&M MATERIALS HANDLING, INC.	Company	RTN25-F		
Issue	Date	Folder		
1-7	10/20/14	ECN25		