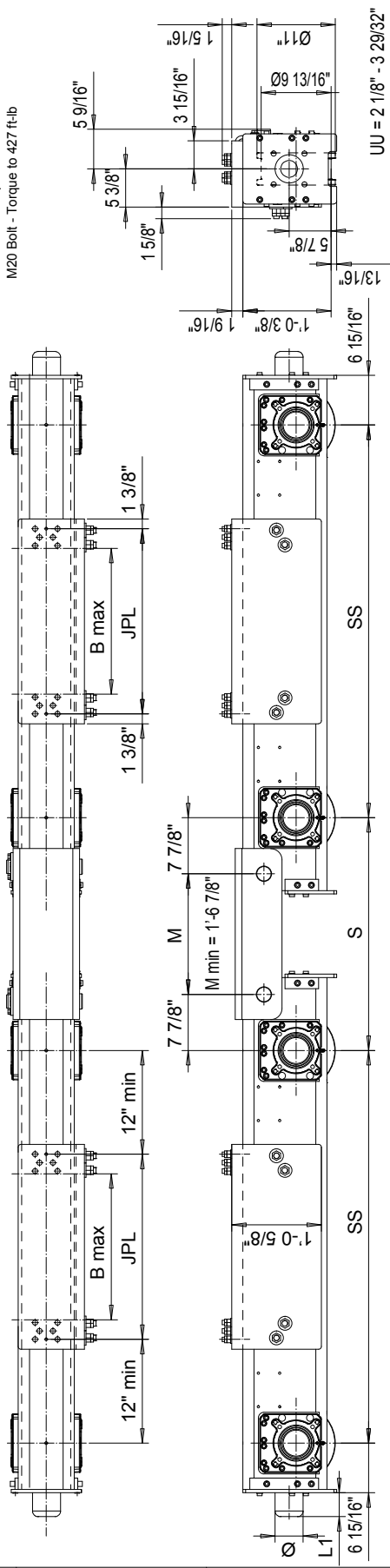


This document is the absolute property of R&M Materials Handling, Inc. This document must not be copied without the written permission of R&M Materials Handling, Inc. The contents hereof must not be disclosed to a third party nor be used for any unauthorized purpose. Contravention will be prosecuted.

RTN25B END TRUCK SIDE JOINT PLATE TYPE F

JOINT PLATE BOLT
TIGHTENING TORQUE
M16 Bolt - Torque to 221 ft-lb
M20 Bolt - Torque to 427 ft-lb



UU = 2 1/8" - 3 29/32"

Joint plate	JPL	B max	Min. Wheelbase
F4	18.9"	15 3/8"	4'-7 1/8"
F5	25.98"	20 1/2"	4'-7 1/8"
F7	35.04"	29 1/2"	5'-3"
F8	40.55"	35"	5'-10 7/8"

The wheel loads listed are only a guideline. The max. wheel load listed is based on the structural integrity of the frame and load placement, and it does not take into account permissible wheel loading or bearing life. SG load placement is at the center, and DG load placement is for a trolley gauge of 1400 mm (55 1/8").
The permissible dynamic wheel load listed is based on assumptions that the bridge speed is 40 min/mi [130 fpm], end truck duty is Fem 2m, and the runway rail as listed.
If permissible dynamic wheel load is greater than the maximum dyn wheel load, use maximum dyn wheel load to select the end truck.
Dyn wheel load = 1.15 x static wheel load

Wheelbase code	SS	Max dyn whl load (kip)	Permissible dyn whl load, (kip)	ASCE 40	ASCE 60	ASCE 85	Approx Weight (lb)
14	4'-7 1/8"	41.63	19.1	25.8	28.4	28.4	1470
16	5'-3"	41.63	19.1	25.8	28.4	28.4	1548
18	5'-10 7/8"	41.63	19.1	25.8	28.4	28.4	1625
20	6'-6 3/4"	41.63	19.1	25.8	28.4	28.4	1704
22	7'-2 5/8"	41.63	19.1	25.8	28.4	28.4	1781
25	8'-2 7/16"	38.48	19.1	25.8	28.4	28.4	1898

- RTN25B 1474-F51570C-0830-N
- N=standard, E=Special primer paint, color code
- Inner wheel distance =S
- Buffer type
- Joint plate distance =PP, (pin to pin, with double girder)
- Joint plate code
- =1WD, D =2WD
- Wheel groove =UU
- Wheel base =SS
- B =bogie
- Type of end carriage

Buffer type	L1	Ø
B	2 11/16"	3 3/16"
C	3 5/16"	3 15/16"
D	4 1/8"	4 15/16"
K	3 3/16"	3 3/16"
G	3 15/16"	3 15/16"
E	5 15/16"	3 15/16"
F	7 1/2"	4 15/16"
H	6 5/16"	6 5/16"
I	7 7/8"	7 7/8"
M	4 15/16"	4 15/16"
P	9 7/16"	6 5/16"
S	11 13/16"	7 7/8"
B, C, D rubber		
K, G, E, F, H, I, M, P, S polyurethane		

Pos	Description	Specification	Id	Drawing
E11	VPH			
2	008-12-09			
	SLEDDOXY			
END TRUCK				
OUTLINE DRAWING				
RTN25B-F				
RTN25B END TRUCK SIDE JOINT				

R&M MATERIALS HANDLING, INC.
1000 W. 10TH STREET
MILWAUKEE, WI 53212
ECONOMY