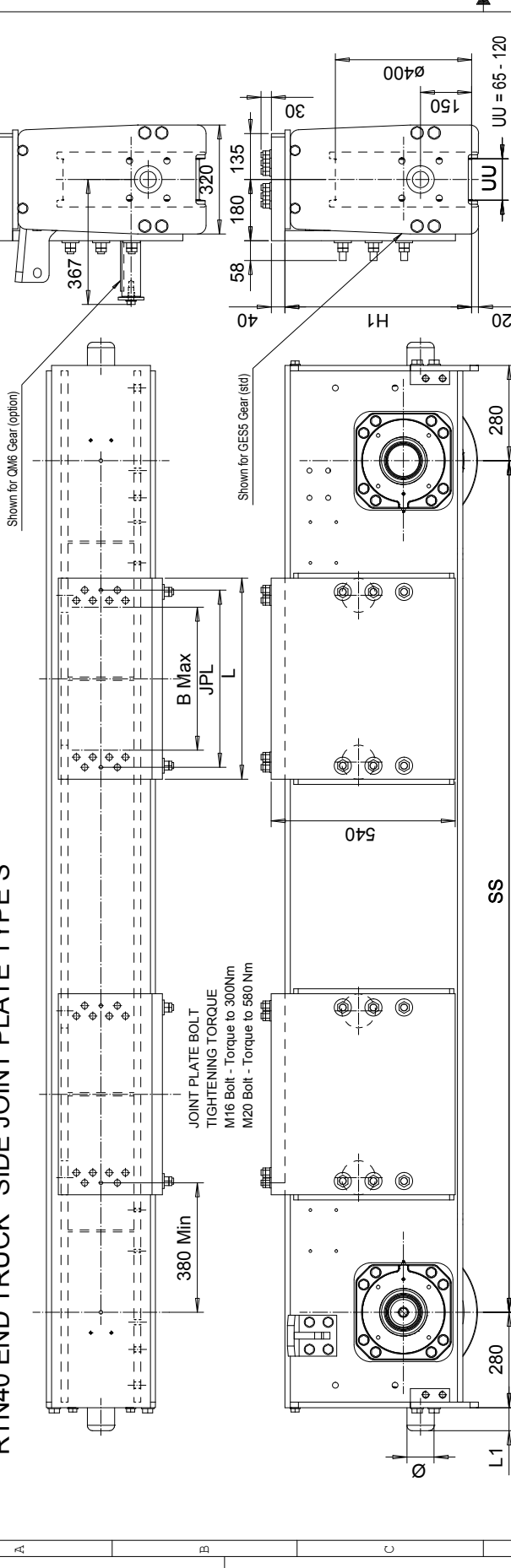


This document is the absolute property of R&M Materials Handling, Inc. This document must not be copied without the written permission of R&M Materials Handling, Inc. The contents thereof must not be disclosed to a third party nor be used for any unauthorized purpose. Contention will be prosecuted.

RTN40 END TRUCK SIDE JOINT PLATE TYPE S



Product Code example
RTN40-2575-S60700C000-N

- N=standard, E=Special
- primer paint, color code (not used with RTN40)
- Buffer type
- Joint plate distance (pin to pin, with double DG girder) (driving wheel to pin with asymmetrical single SG girder)
- Joint plate code
- =1WD, D =2WD (Number of driving wheels/end carriage)
- Wheel groove =UU
- Wheel base =SS
- =std, C=asymmetrical joint
- Type of end carriage

The wheel loads listed are only a guideline. The max. wheel load listed is based on the structural integrity of the frame and load placement, and it does not take into account permissible wheel loading or bearing life. SG load placement is at the center, and DG load placement is for a trolley gage of 1400 mm [55 1/8\"/>

Joint plate	JPL (mm)	B max (mm)	L (mm)	Weight/pc (kg)
S6	520	410	590	139
S7	720	620	800	185
S9	1100	990	1170	265

Minimum wheelbase with S9 joint plate is 3150 mm.

*Approximate weight of end truck assumes GESS drive wheel and S6 joint plate.
 QM6 drive parts adds extra weight.

QM6	Weight, kg
	33

Wheelbase code	SS (mm)	Max dyn whl load, (kN)	Permitted whl load, (kN)	Approx Wt./Trk, kg	H1 (mm)
25	2500	350	ASCE 85	BETH 135	DG 1248
32	3150	350	224.5	296	548
40	4000	350	224.5	296	548
45	4500	350	224.5	296	552
50	5000	350	224.5	296	668
55	5500	350	224.5	296	1658
				1689	1828

Buffer type	L1, (mm)	Ø, (mm)
B	68	80
C	85	100
D	105	125
E	150	100
F	190	125
H	160	160
I	200	200
M	125	125
P	240	160
S	300	200
T	350	250
Y	475	250

B, C, D rubber
 E, F, H, I, M, P, S, T, Y polyurethane

ETTPVA	Design	ETTPVA	Ref Drawing
2008-08-11	Date	END TRUCK	
SLEDDOCV	Part	OUTLINE DRAWING	
	Scale	RTN40-S	1:1
R&M MATERIALS HANDLING, INC.	Company	RTN40-S	Issue
			6/2013