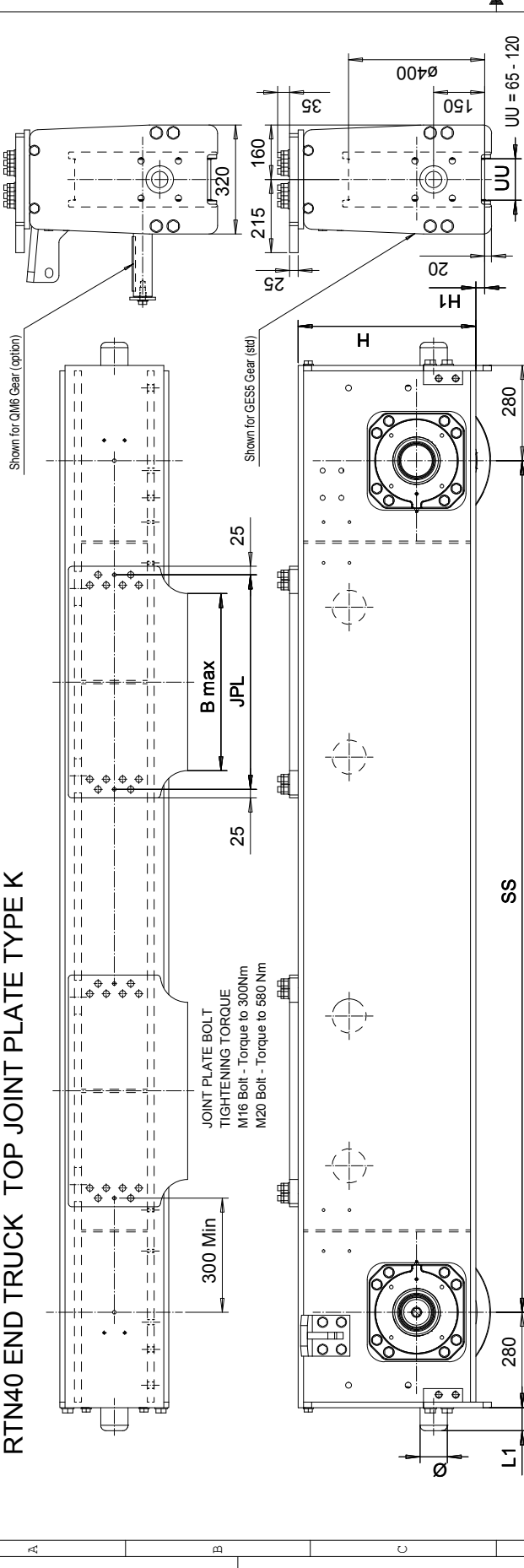


This document is the absolute property of R&M Materials Handling, Inc. This document must not be copied without the written permission of R&M Materials Handling, Inc. The contents thereof must not be disclosed to a third party nor be used for any unauthorized purpose. Contention will be prosecuted.

RTN40 END TRUCK TOP JOINT PLATE TYPE K



The wheel loads listed are only a guideline. The max. wheel load listed is based on the structural integrity of the frame and load placement, and it does not take into account permissible wheel loading or bearing life. SG load placement is at the center, and DG load placement is for a trolley gearset 1400 mm (55 1/8"). The permissible dynamic wheel load listed is based on assumptions that the bridge speed is 32 min/m (100 fpm), end truck duty is Fan 2m, and the runway rail as listed. The actual wheel load should not exceed the permissible wheel load. If the permissible dynamic wheel load is greater than the maximum dyn wheel load, then the actual wheel load cannot exceed maximum dyn wheel load.

Dyn wheel load = 1.15 x static wheel load.

Product Code example
RTN40-2575-K50570C0000-N

N=standard, E=Special
 -primer paint, color code (not used with RTN40)
 Buffer type
 Joint plate distance (pin to pin, with double DG girder) (driving wheel to pin with asymmetrical single SG girder)
 Joint plate code
 - =TWD, D =2WD (Number of driving wheels/end carriage)
 Wheel groove =UU
 Wheel base =SS
 -sid, C=asymmetrical joint
 Type of end carriage

Wheelbase code	SS (mm)	Max dyn whl load, (kN)	Permitted whl load, (kN)	Approx Wt.*/Trk, kg	H (mm)	H1 (mm)
25	2500	350	BETH 135	1017	522	26
32	3150	350	296	1047	522	26
40	4000	350	296	1127	530	22
45	4500	350	296	1247	642	26
50	5000	350	296	1427	1474	22
55	5500	350	296	1597	1644	22

Buffer type	L1, (mm)	Ø, (mm)
B	68	80
C	85	100
D	105	125
E	150	100
F	190	125
H	160	160
I	200	200
M	125	125
P	240	160
S	300	200
T	350	250
Y	475	250

Minimum wheelbase with K9 joint plate is 3150 mm.
 *Approximate weight of end truck assumes GESS drive wheel and K5 joint plate.
 QM6 drive parts axis extra weight.

Joint plate	JPL (mm)	B max (mm)	Weight/pc (kg)
K4	520	410	39
K5	630	520	47
K7	850	740	62
K9	1100	990	79

Design	App'd	Ref Drawing															
ETTPVA 2008-08-11																	
Date	Part	Scale															
SLEDDOCV	OUTLINE DRAWING	1:1															
<table border="1"> <thead> <tr> <th>Part</th> <th>Material</th> </tr> </thead> <tbody> <tr> <td>QM6</td> <td>B, C, D rubber</td> </tr> </tbody> </table>			Part	Material	QM6	B, C, D rubber											
Part	Material																
QM6	B, C, D rubber																
<table border="1"> <thead> <tr> <th>Design</th> <th>App'd</th> <th>Ref Drawing</th> </tr> </thead> <tbody> <tr> <td>ETTPVA</td> <td></td> <td></td> </tr> <tr> <th>Date</th> <th>Part</th> <th>Scale</th> </tr> <tr> <td>2008-08-11</td> <td>END TRUCK</td> <td>1:1</td> </tr> <tr> <td>SLEDDOCV</td> <td>OUTLINE DRAWING</td> <td>1:1</td> </tr> </tbody> </table>			Design	App'd	Ref Drawing	ETTPVA			Date	Part	Scale	2008-08-11	END TRUCK	1:1	SLEDDOCV	OUTLINE DRAWING	1:1
Design	App'd	Ref Drawing															
ETTPVA																	
Date	Part	Scale															
2008-08-11	END TRUCK	1:1															
SLEDDOCV	OUTLINE DRAWING	1:1															
<table border="1"> <thead> <tr> <th>Part</th> <th>Material</th> </tr> </thead> <tbody> <tr> <td>RTN40-K</td> <td>Rubber</td> </tr> <tr> <td>RTN40-K</td> <td>Steel</td> </tr> </tbody> </table>			Part	Material	RTN40-K	Rubber	RTN40-K	Steel									
Part	Material																
RTN40-K	Rubber																
RTN40-K	Steel																
<table border="1"> <thead> <tr> <th>Part</th> <th>Material</th> </tr> </thead> <tbody> <tr> <td>RTN40-K</td> <td>Rubber</td> </tr> <tr> <td>RTN40-K</td> <td>Steel</td> </tr> </tbody> </table>			Part	Material	RTN40-K	Rubber	RTN40-K	Steel									
Part	Material																
RTN40-K	Rubber																
RTN40-K	Steel																

R&M MATERIALS HANDLING, INC.
 10000 W. 100th St., Suite 100
 Overland Park, KS 66213
 Phone: 913.241.1111
 Fax: 913.241.1112
 Email: sales@rmh.com