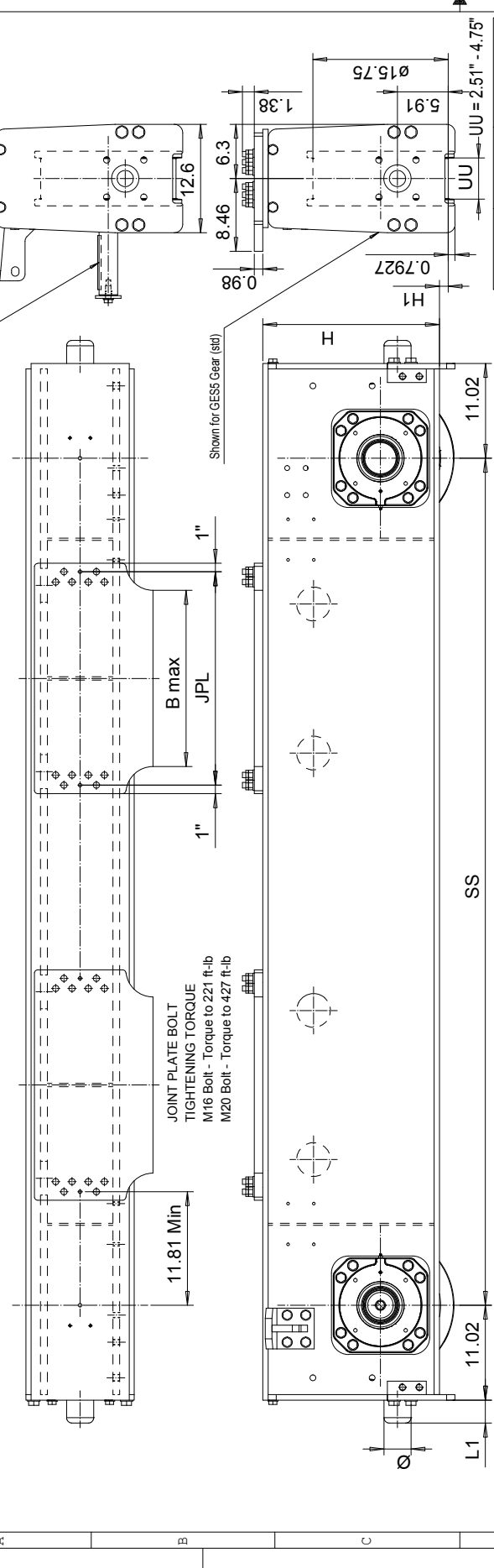


This document is the absolute property of R&M Materials Handling, Inc. This document must not be copied without the written permission of R&M Materials Handling, Inc. The contents thereof must not be disclosed to a third party nor be used for any unauthorized purpose. Contention will be prosecuted.

RTN40 END TRUCK TOP JOINT PLATE TYPE K



The wheel loads listed are only a guideline. The max. wheel load listed is based on the structural integrity of the frame and load placement, and it does not take into account permissible wheel loading or bearing life. SG load placement is at the center, and DG load placement is for a trolley gearset 1400 mm (55 1/8"). The permissible dynamic wheel load listed is based on assumptions that the bridge speed is 32 min/in (100 fpm), end truck duty is Fan 2m, and the runway rat is listed. The actual wheel load should not exceed the permissible wheel load. If the permissible dynamic wheel load is greater than the maximum dyn wheel load, then the actual wheel load cannot exceed maximum dyn wheel load.
 Dyn wheel load = 1.15 x static wheel load.

Product Code example
RTN40-257.5-K50570C0000-N

N=standard, E=Special
 -primer paint, color code (not used with RTN40)
 Buffer type
 Joint plate distance (pin to pin, with double DG girder) (driving wheel to pin with asymmetrical single SG girder)
 Joint plate code
 - =TWD, D =2WD (Number of driving wheels/end carriage)
 Wheel groove =UU
 Wheel base =SS
 - =sid, C=asymmetrical joint
 Type of end carriage

Wheelbase code	SS	Max dyn wtl load, (kip)	Permitted wtl load, (kip)	Approx. Wt*.Trk, lb	H	H1
25	8'-2 7/16"	78.8	78.8	2346	20 9/16"	1"
32	10'-4"	78.8	78.8	2412	20 9/16"	1"
40	13'-1 1/2"	78.8	78.8	2588	20 7/8"	7/8"
45	14'-9 1/8"	78.8	78.8	2853	25 5/16"	1"
50	16'-4 7/8"	78.8	78.8	3250	25 5/8"	7/8"
55	18'-1/2"	78.8	78.8	3624	25 5/8"	7/8"

Buffer type	L1	B max	JPL	Weight/pc (lb)
B	2 11/16"	16.14"	20.47"	86
C	3 5/16"	20.47"	24.80"	104
D	4 1/8"	29.13"	33.46"	137
E	5 15/16"	38.98"	43.31"	174
F	7 1/2"			
H	6 5/16"			
I	7 7/8"			
M	4 15/16"			
P	9 7/16"			
S	11 13/16"			
T	13 3/4"			
Y	18 3/4"			

Minimum wheelbase with K9 joint plate is 10'-4".
 *Approximate weight of end truck assumes GESS drive wheel and K5 joint plate.
 QM6 drive parts axis extra weight.

Design	2008-08-11	Drawn	SLEDDOCV	Part	ETTPVA	2008-08-11	Checked	END TRUCK
Design	2008-08-11	Drawn	SLEDDOCV	Part	ETTPVA	2008-08-11	Checked	END TRUCK
OUTLINE DRAWING								
RTN40-K								
RTN40 END TRUCK TOP JOINT								

R&M MATERIALS HANDLING, INC.
 6/2013