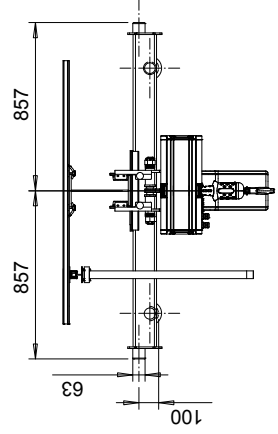
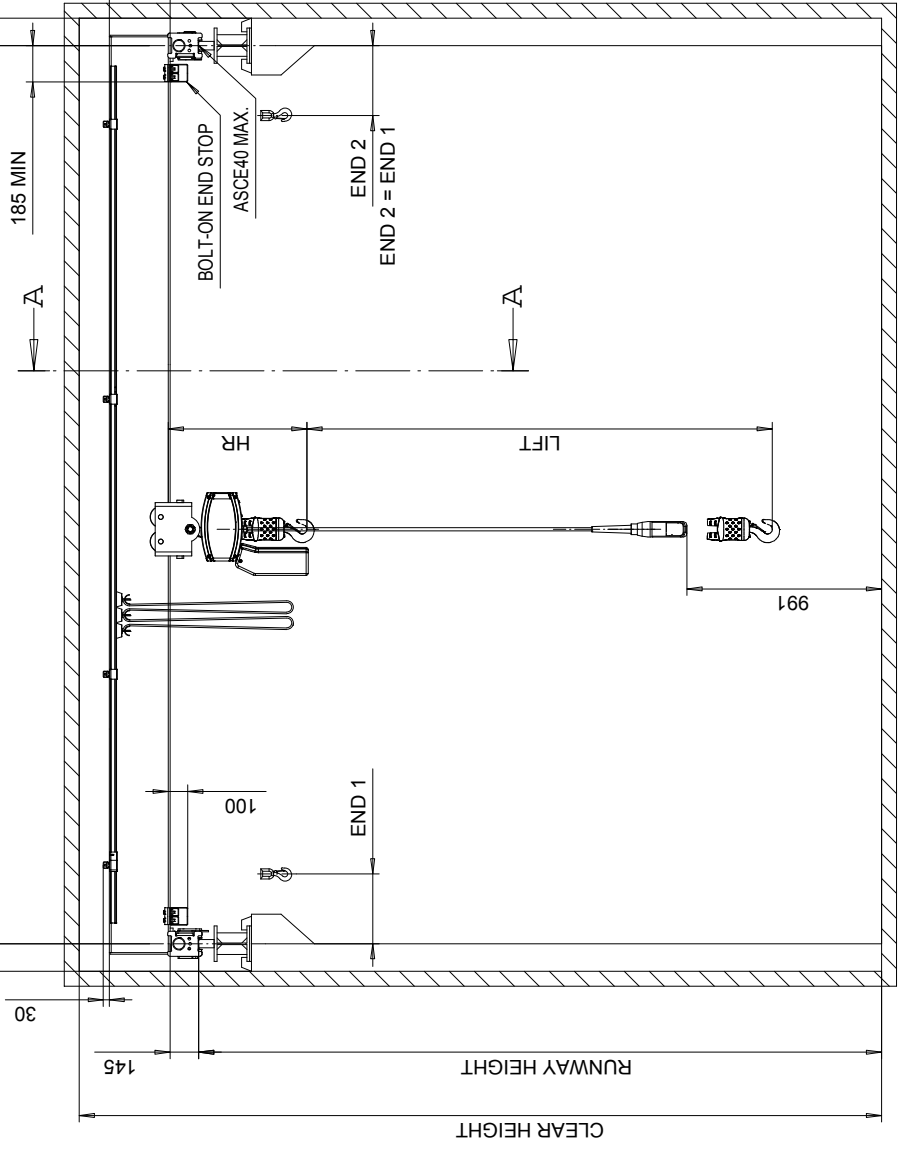


**MEDIUM CONNECTION**

MIN 140

SPAN

MIN. 140



**VIEW A-A**

Capacity	Hoist	HR, mm	STD	MED
500 kg	LK05 C - 1 fall	451	END 2, mm	END 4, mm
1000 kg	LK10 C - 1 fall	584	334	531
2000 kg	LK10 C - 2 fall	711	354	551
			374	574

Dimensions are in millimeters.



**QLP SGTR PUSH CRANE**