

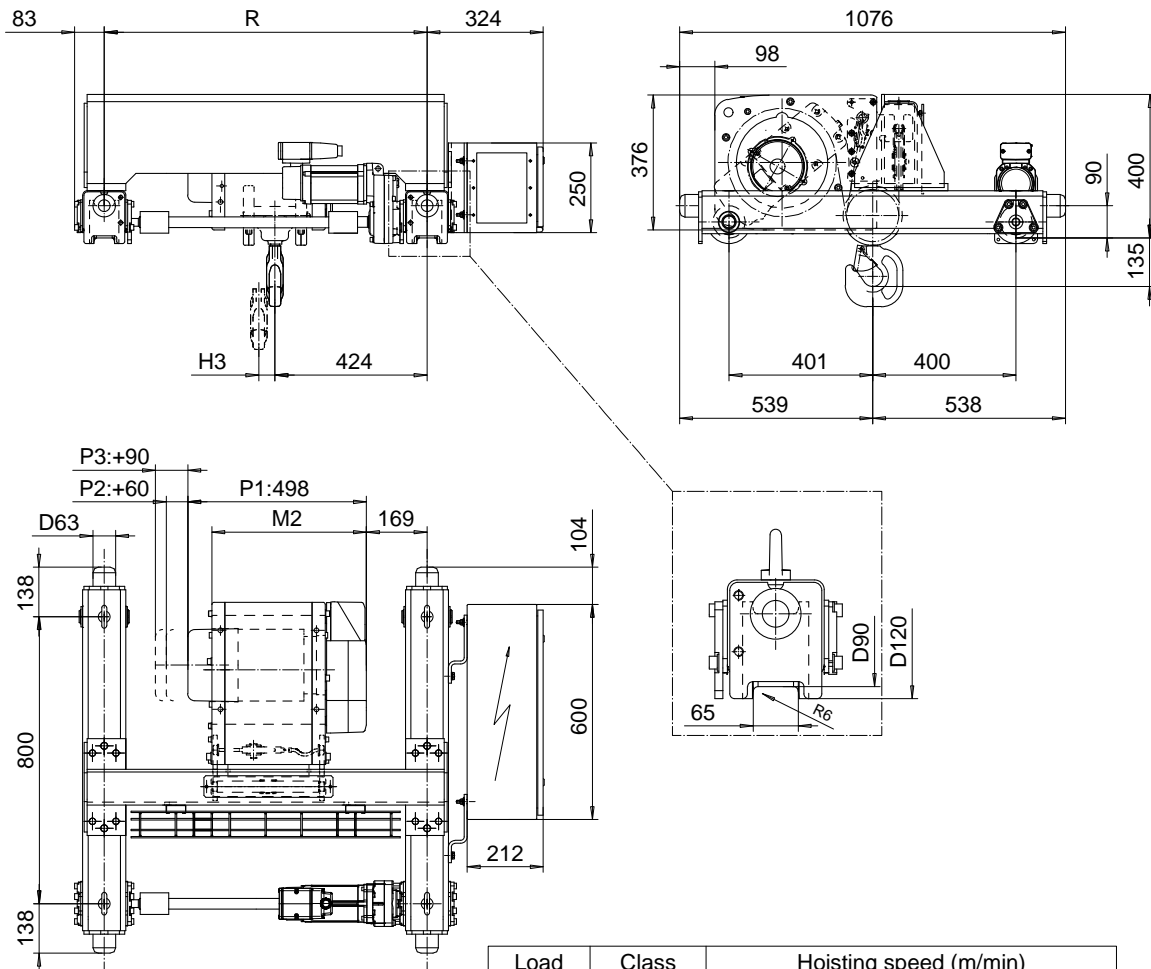
DOUBLE GIRDER, HIGH CONNECTION, 4 PART SINGLE

Hoist type:

SX2 041..DH

SX3 041..DH

SI-50Hz



Load (kg)	Class Fem/ISO	Hoisting speed (m/min)			
		Gear+Motor code:			
		F+P1	F+P2	G+P2	H+P3
1600	3m/M6	5/0.8	5/0.8	6.3/1.1	8/1.3
2000	2m/M5	5/0.8	5/0.8	6.3/1.1	8/1.3
2500	3m/M6	-	5/0.8	6.3/1.1	8/1.3
3200	2m/M5	-	5/0.8	6.3/1.1	8/1.3
+ weight (kg):		-	10	10	13

HOL	Length	M2	H3	min R	Weight
(m)	code	(mm)	(mm)	(mm)	(kg)
6	A	431	45	900	210
9.5	C	561	72	900	220

Note: minR is minimum rail gauge when second brake is supplied
Standard rail gauges are 900, 1200, 1400, 1700, and 2000 mm

This document is the absolute property of R&M Materials Handling, Inc. This document must not be copied without the written permission of R&M Materials Handling, Inc. The contents thereof must not be disclosed to a third party nor be used for any unauthorized purpose. Contravention will be prosecuted.

Design	Chk	Appd	Ref Drawing	QA-H-04
Date	TROLLEY; DOUBLE GIRDER			1:1 P Tol:Min
SLEIGH/MECE Owner Dept	HIGH, 4 ROPE FALLS			
R&M MATERIALS HANDLING, INC. R&M R&M MATERIALS HANDLING, INC. R&M	D002079-A			DRAWN 5