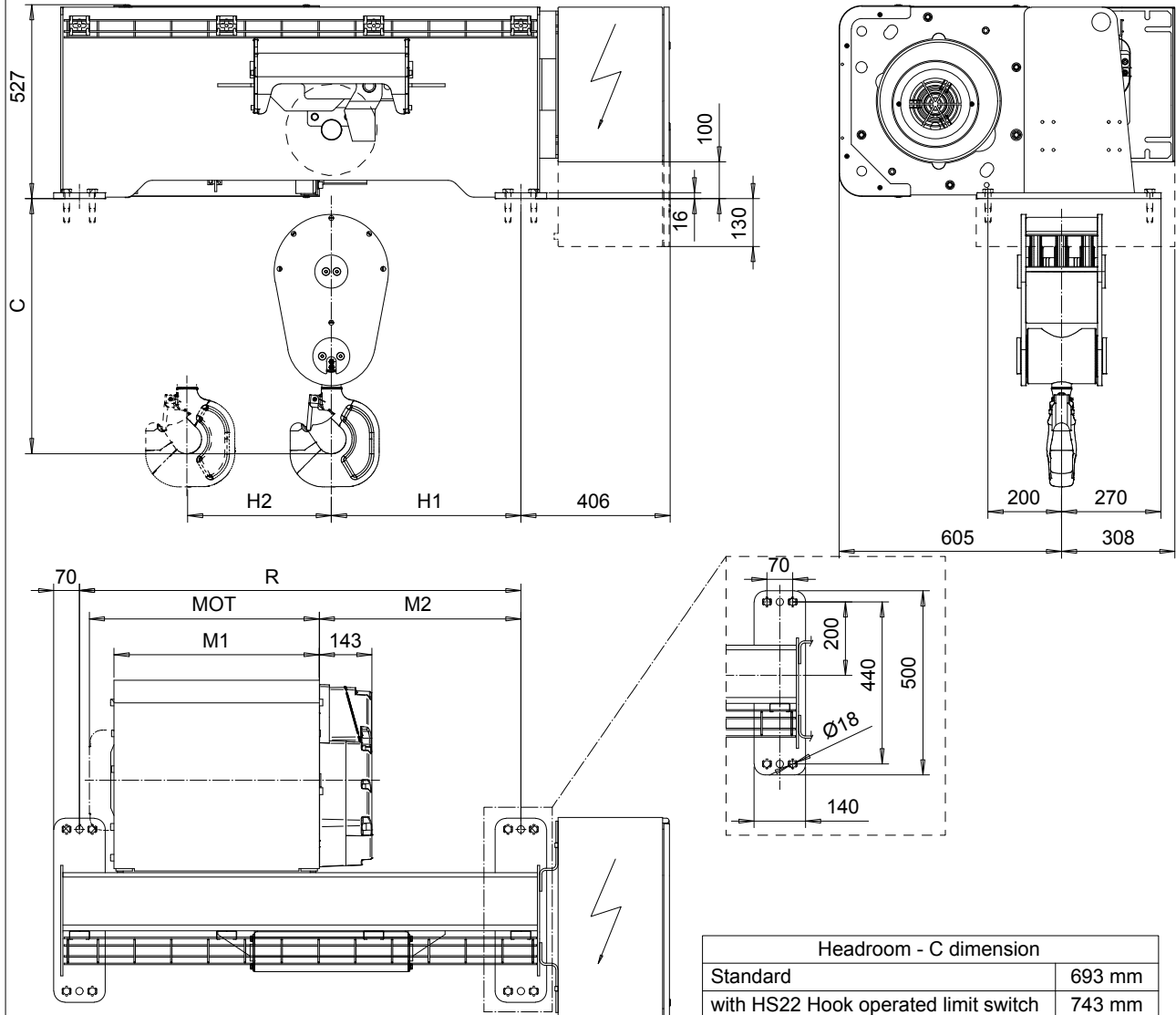


FOOT MOUNT, 6 PART SINGLE

Hoist type:

SX5 061...F0

SI-50Hz



Headroom - C dimension	
Standard	693 mm
with HS22 Hook operated limit switch	743 mm

Motor	P5	P6	P7	A5	S5	S7
MOT (mm)	578	578	618	498	606	757
Weight (kg)	58	85	105	45	53	81

Load (kg)	Class Fem/ISO
12000	3m/M6
15000	2m/M5

HOL (m)	Length code	M1 (mm)	M2 (mm)	R (mm)	H1 (mm)	H2 (mm)	Approx. Weight (kg)
6	D	558	548	1200	515	53	585
8	E	678	628	1400	595	78	625
10	F	828	778	1700	745	98	675
13	G	1018	888	2000	855	132	735

Approx weight calculated with P5 motor

This document is the absolute property of R&M Materials Handling, Inc. This document must not be copied without the written permission of R&M Materials Handling, Inc. The contents thereof must not be disclosed to a third party nor be used for any unauthorized purpose. Contravention will be prosecuted.

ETTPAL Design	ETTPAL Chd	Appd	Ref Drawing	QC-F-06
2002-08-30 Date	HOIST; FIXED			1:1 Folder
SLEQDQCV Owner Dept	6-ROPE FALLS			
R&M MATERIALS HANDLING INC.	R&M MATERIALS HANDLING, INC HOIST & CRANE PRODUCTS SPRINGFIELD, OHIO	D007242-A		Issue 2