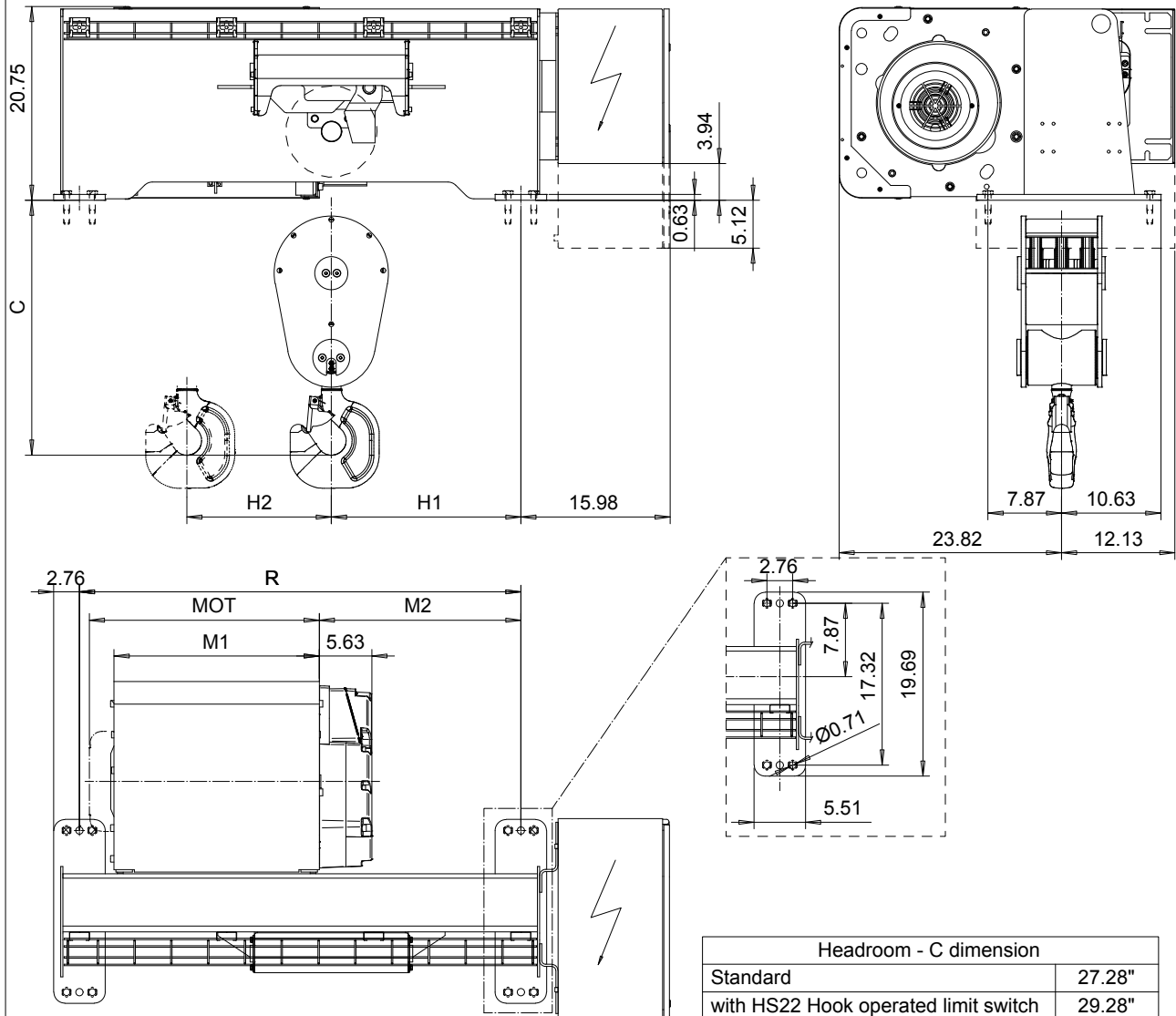


# FOOT MOUNT, 6 PART SINGLE

Hoist type:

SX5 061...F0

US-60Hz



Headroom - C dimension	
Standard	27.28"
with HS22 Hook operated limit switch	29.28"

Motor	P5	P6	P7	A5	S5	S7
MOT (in)	22.76	22.76	24.33	19.61	23.86	29.8
Weight (lb)	128	187	231	99	117	179

Load (TON)	Class ASME
12	H4+
15	H4

HOL	Length code	M1 (inch)	M2 (inch)	R (inch)	H1 (inch)	H2 (inch)	Approx. Weight (lb)
19'-8"	D	21.97	21.57	47.24	20.27	2.09	1290
26'-2"	E	26.69	24.72	55.12	23.43	3.07	1378
32'-9"	F	32.6	30.63	66.93	29.33	3.86	1488
42'-7"	G	40.08	34.96	78.74	33.66	5.2	1620

Approx weight calculated with P5 motor

This document is the absolute property of R&M Materials Handling, Inc. This document must not be copied without the written permission of R&M Materials Handling, Inc. The contents thereof must not be disclosed to a third party nor be used for any unauthorized purpose. Contravention will be prosecuted.

ETTPAL Design	ETTPAL Chd	Appd	Ref Drawing	QC-F-06
2002-08-30 Date	HOIST; FIXED			
SLEQDQCV Owner Dept	6-ROPE FALLS			
R&M MATERIALS HANDLING INC.	R&M MATERIALS HANDLING, INC HOIST & CRANE PRODUCTS SPRINGFIELD, OHIO	D007242-A		Issue 2