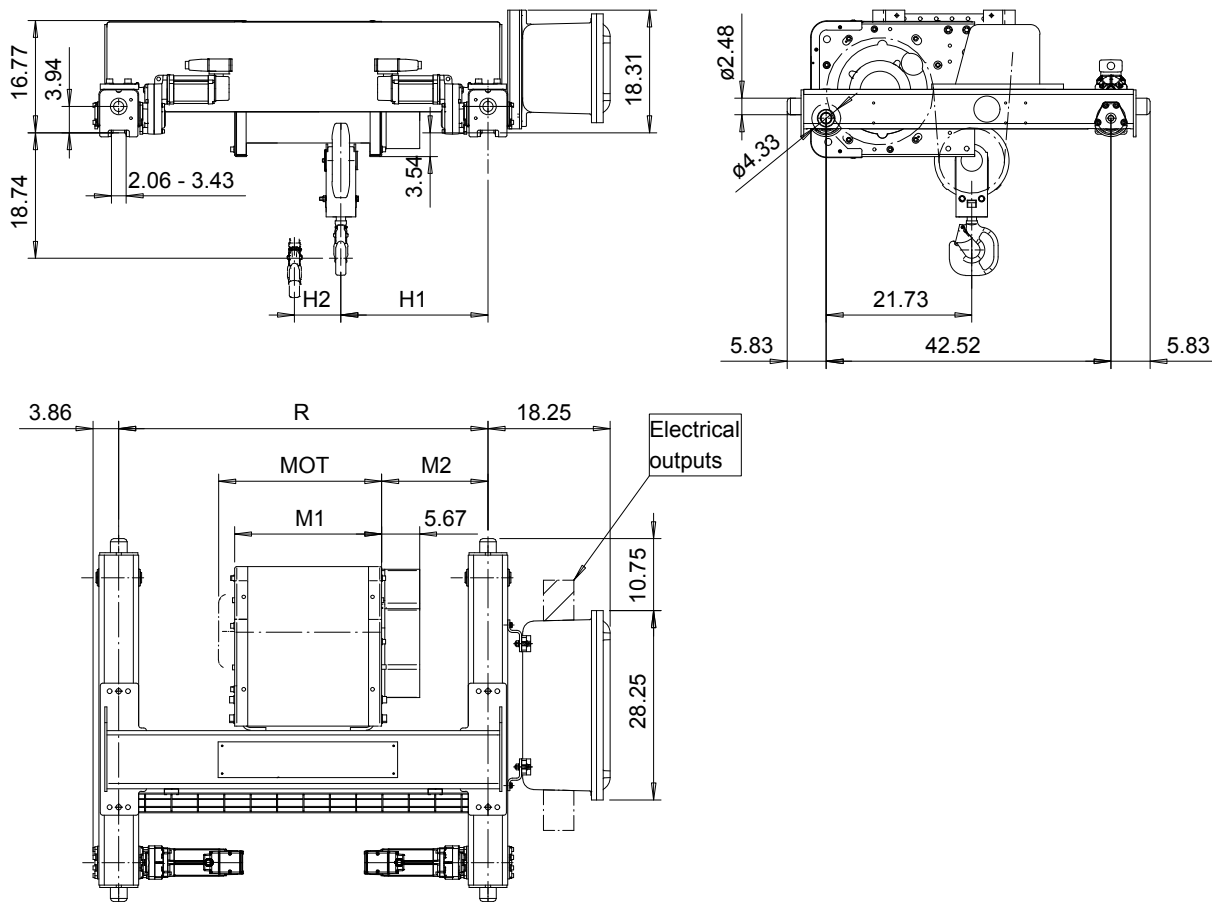


R&M SPACEMASTER EX

DOUBLE GIRDER, 2 PART SINGLE SX5 EX 021...D0



US-60Hz

Motor	P5	P6
MOT (in)	22.76	22.76
Weight (lb)	128	187

HOL (ft)	Length code	M1 (inch)	M2 (inch)	H1 (inch)	H2 (inch)	Min R	Approx Weight (lb)
59'-0"	D	21.97	15.87	25.2	6.93	4'-7 1/8"	1697
78'-8"	E	26.69	15.87	25.2	9.25	4'-7 1/8"	1763
104'-11"	F	32.6	20.31	29.65	12.17	5'-6 7/8"	1862
131'-2"	G	40.08	26.22	35.55	15.87	6'-6 3/4"	1951

Load (ton)	Class ASME
4	H4+
5	H4

min R is minimum rail gauge when service platform or second brake is supplied.
Standard rail gauges are 55 1/8", 66 15/16" and 78 3/4"