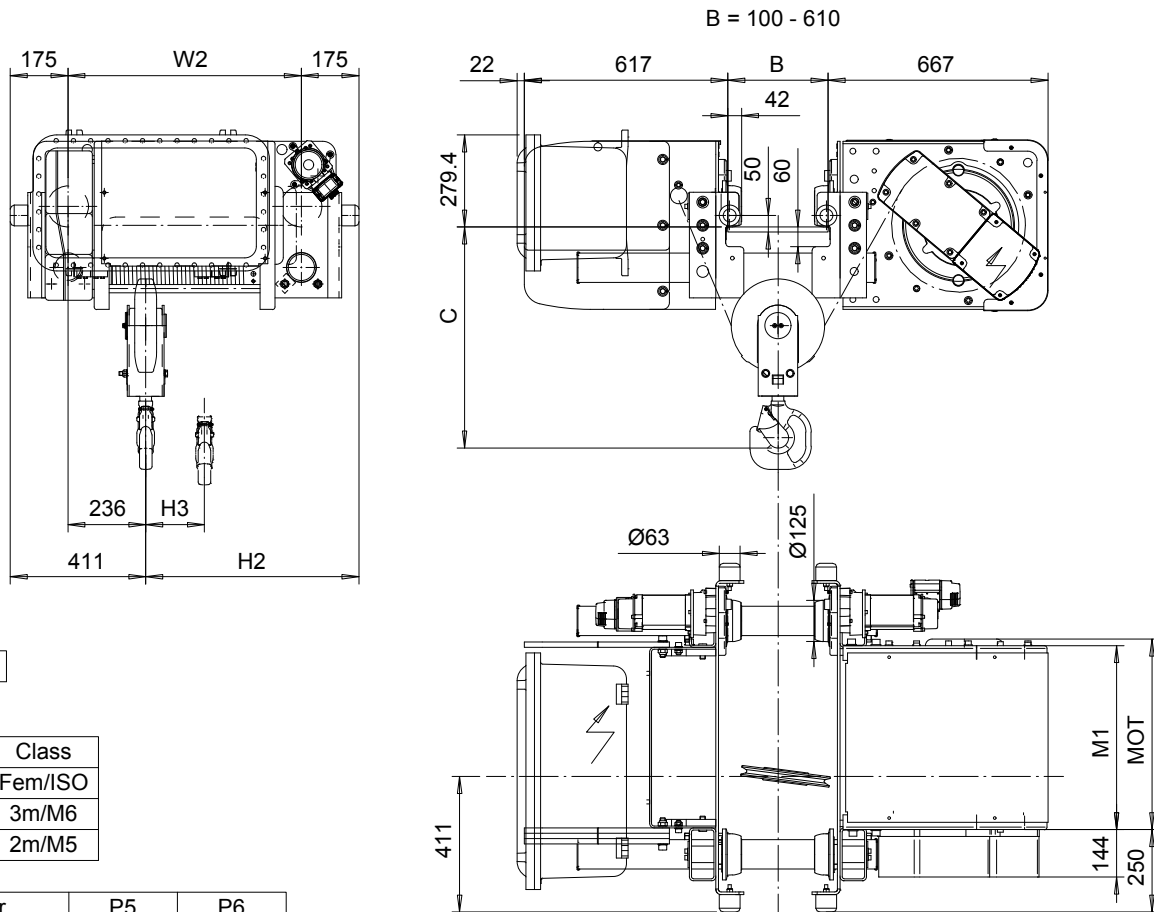


R&M SPACEMASTER EX

LOW HEADROOM, 2 PART SINGLE

SX5 EX 021...L0



SI-60Hz

Load (kg)	Class Fem/ISO
4000	3m/M6
5000	2m/M5

Motor	P5	P6
MOT (mm)	578	578
Weight (kg)	58	85

HEADROOM TABLE - C DIMENSION	
Flange Width, B (mm)	Standard (mm)
100 - 199	630
200 - 259	600
260 - 440	580
341 - 540	640
551 - 610	680

Headroom is related to the flange width

HOL (m)	Length code	M1 (mm)	H2 (mm)	H3 (mm)	W2 (mm)	Approx Weight (kg)
18	D	558	647	176	708	695
24	E	678	767	235	828	740
32	F	828	946	309	978	790