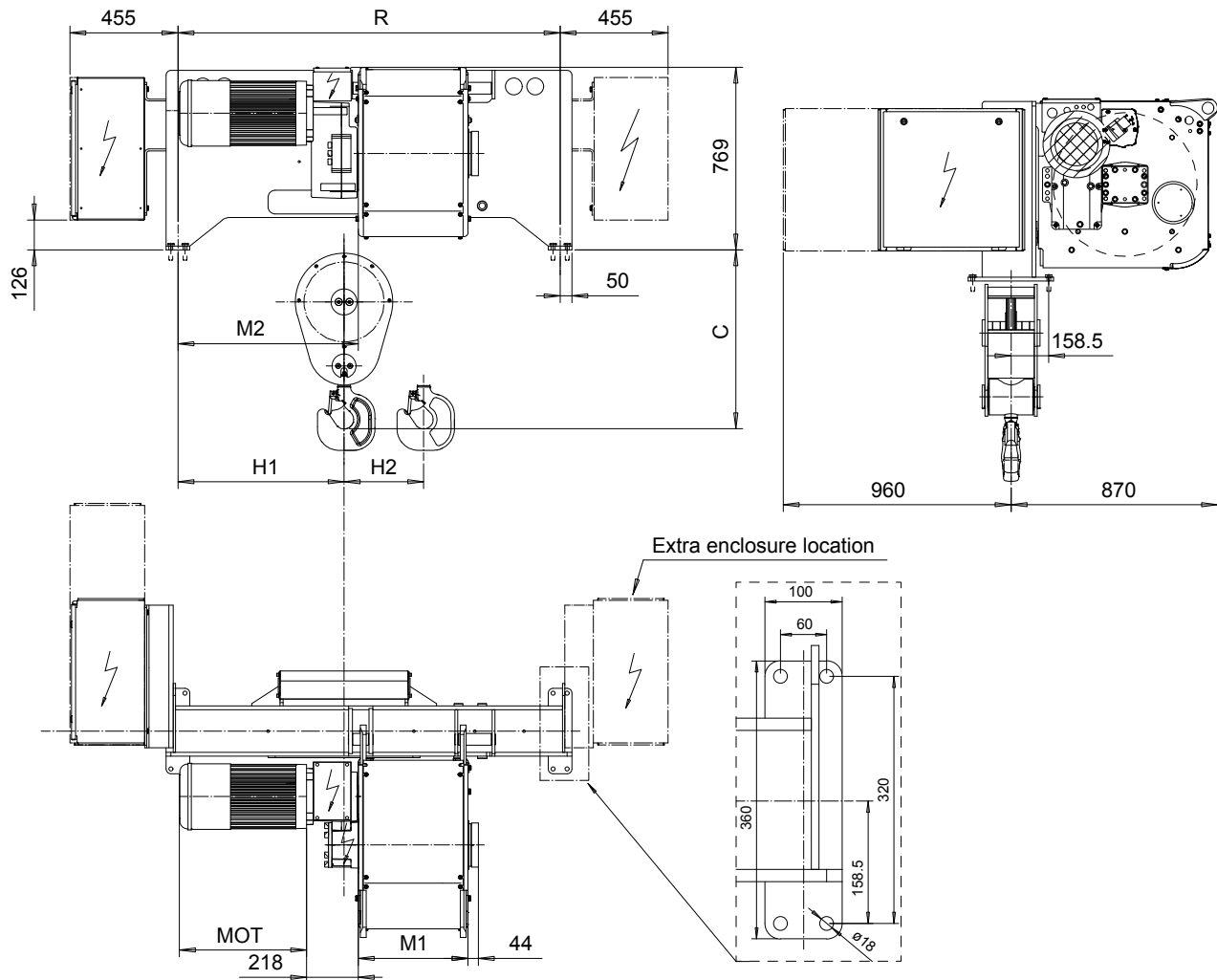


# FOOT MOUNT, 2 PART SINGLE

Hoist type:

SX6 021...F0

SI-50Hz



HOL	HOL*	Length	R	M1	M2	H1	H2	Approx Weight
(m)	(m)	code	(mm)	(mm)	(mm)	(mm)	(mm)	(kg)
15.5	10	C	1610	462	760	700	139	1200
21	15.5	D	1610	562	760	700	188	1300
28	22.5	E	1840	682	590	650	251	1300
36	30.5	F	1840	832	590	650	322	1400
47	41.5	G	2350	1022	670	730	421	1500
61	55.5	H	2350	1272	670	730	546	1600
80.5	75	J	2759	1622	840	690	721	1900
97	91.5	K	2759	1922	840	690	868	2000

HOL\* with optional drum brake Weight of drum brake is 80 kg.

Motor	P6	P7	P8	A7	S7	S8	SA
MOT (mm)	536	576	711	536	715	763	803
Weight (kg)	85	105	106	71	81	97	120

Load	Class
(kg)	Fem/ISO
6300	3m/M6
8000	2m/M5
10000	1Am/M4

Headroom - C dimension	
Standard	754 mm
with HS22 Hook operated limit switch	804 mm

Hoist weight calculated with P6 motor weight and without drum brake.

This document is the absolute property of R&M Materials Handling, Inc. This document must not be copied without the written permission of R&M Materials Handling, Inc. The contents thereof must not be disclosed to a third party nor be used for any unauthorized purpose. Contravention will be prosecuted.

ETTPAL	ETTPAL	Appd	Ref Drawing	QD-F-02
Design	Chd			
2002-09-02				
Date	HOIST; FIXED			
SLEODOCV	2 ROPE FALLS			
Owner Dept	1:13			
	Folder			
R&M	D006936-A			
MATERIALS	Issue			
HANDLING	11/2013			
INC.				