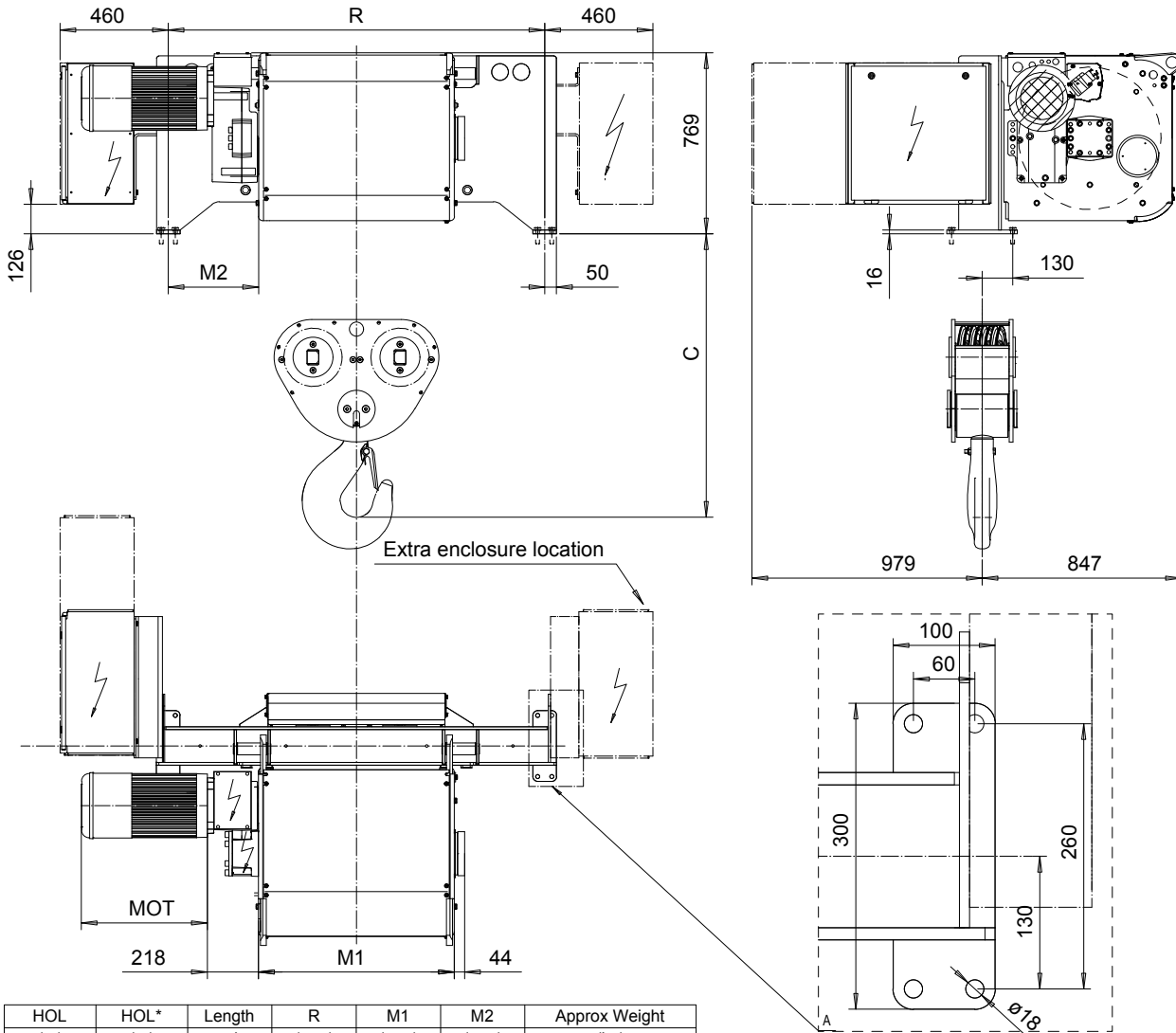


FOOT MOUNT, 8 PART DOUBLE

Hoist type:

SX6 082...F0

SI-50Hz



HOL (m)	HOL* (m)	Length code	R (mm)	M1 (mm)	M2 (mm)	Approx Weight (kg)
5	3.5	F	1600	832	384	1500
7	5.5	G	1600	1022	289	1600
9.5	8	H	2200	1272	464	1800
12.5	11	J	2200	1622	289	1900
15.5	14	K	2250	1922	164	2100
19	17.5	L	2250	2272	-10	2200
21.5	20	M	2800	2522	139	2400
24.5	23	N	2800	2822	-10	2600

HOL* with optional drum brake Weight of drum brake is 80 kg.

Motor	P6	P7	P8	A7	S7	S8	SA
MOT (mm)	536	576	711	536	715	763	803
Weight (kg)	85	105	106	71	81	97	120

Load (kg)	Class Fem/ISO
32000	2m/M5
40000	1Am/M4

Headroom - C dimension	
Standard	1206 mm
with HS22 Hook operated limit switch	1256 mm

Hoist weight calculated with P6 motor weight and without drum brake.

This document is the absolute property of R&M Materials Handling, Inc. This document must not be copied without the written permission of R&M Materials Handling, Inc. The contents thereof must not be disclosed to a third party nor be used for any unauthorized purpose. Contravention will be prosecuted.

ETTPAL Design	KHHMKH	Appd	Ref Drawing	QD-F-28
2002-09-03 Date	HOIST; FIXED			
SLEQDOCV Owner Dept	2x8 ROPE FALLS			
R&M MATERIALS HANDLING INC.	R&M MATERIALS HANDLING, INC HOIST & CRANE PRODUCTS SPRINGFIELD, OHIO	D006943-A		1:13 Folder Issue 2/2016