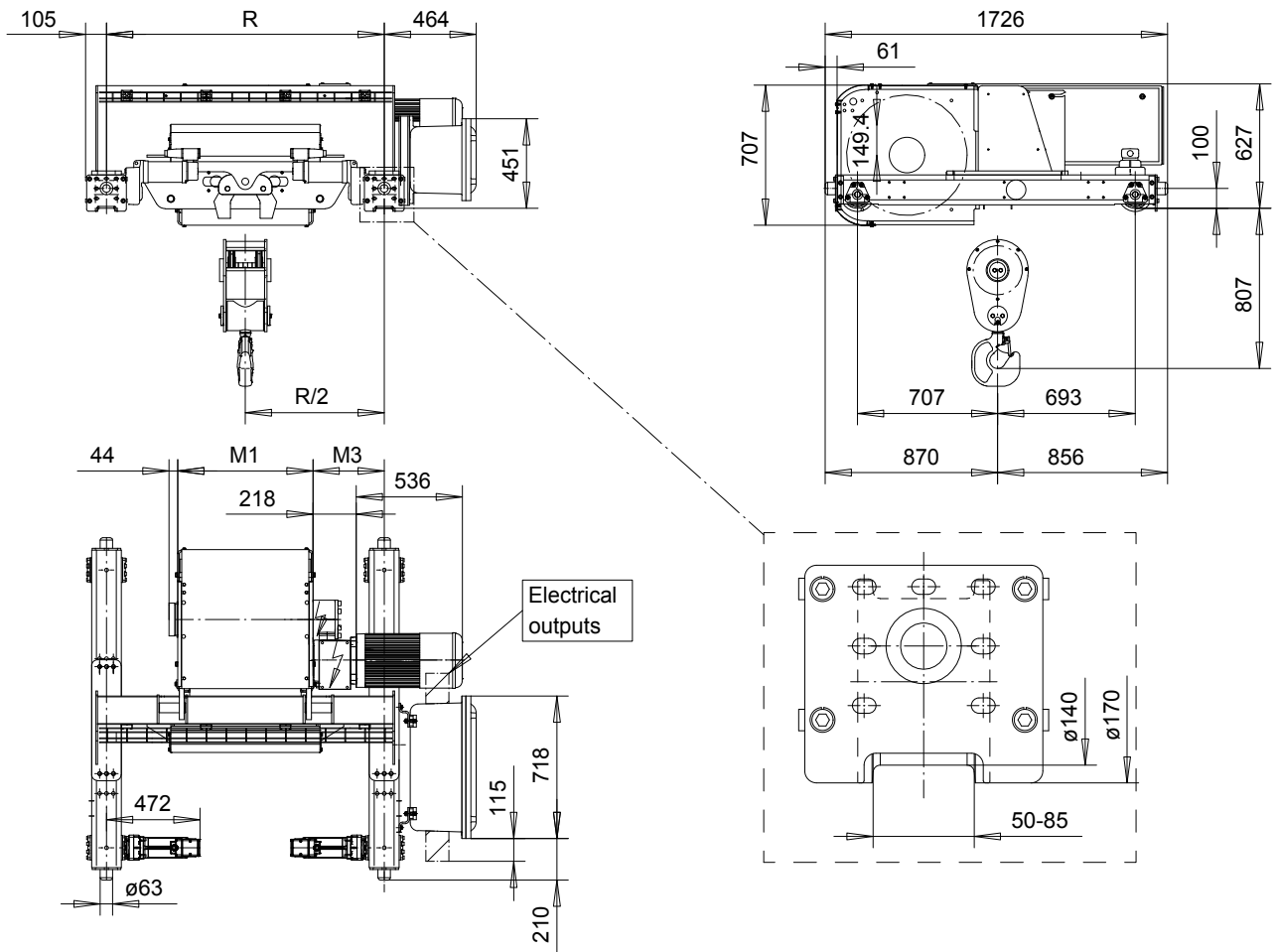


# R&M SPACEMASTER EX

DOUBLE GIRDER, 2 PART DOUBLE  
SX6 EX 022...D0



SI-60Hz

Load (kg)	Class Fem/ISO	Hoisting speed (m/min)	
		9.5/1.6	12/2
6300	3m/M6	9.5/1.6	12/2
8000	2m/M5	9.5/1.6	12/2
10000	1Am/M4	9.5/1.6	-

HOL (m)	Length code	M1 (mm)	M3 (mm)	min R-max R (mm)	Weight (kg)
16.5	E	682	359	1400	1280
22	F	832	434	1700	1370
29.5	G	1022	339	1700-2000	1430
39	H	1272	364	2000-2400	1540
52	J	1622	389	2400-2700	1700
63.5	K	1922	389	2700-3100	1870
77	L	2272	414	3100-3400	2110
86.5	M	2522	439	3400-3800	2260
98	N	2822	489	3800-4200	2450

min R is minimum rail gauge when service platform is supplied. Weight calculated at minR. Weight increases with longer gauges. Standard rail gauges are 1400, 1700, 2000, 2400, 2700, 3100, 3400, 3800, and 4200

R&M reserves the right to alter or amend the above information without notice