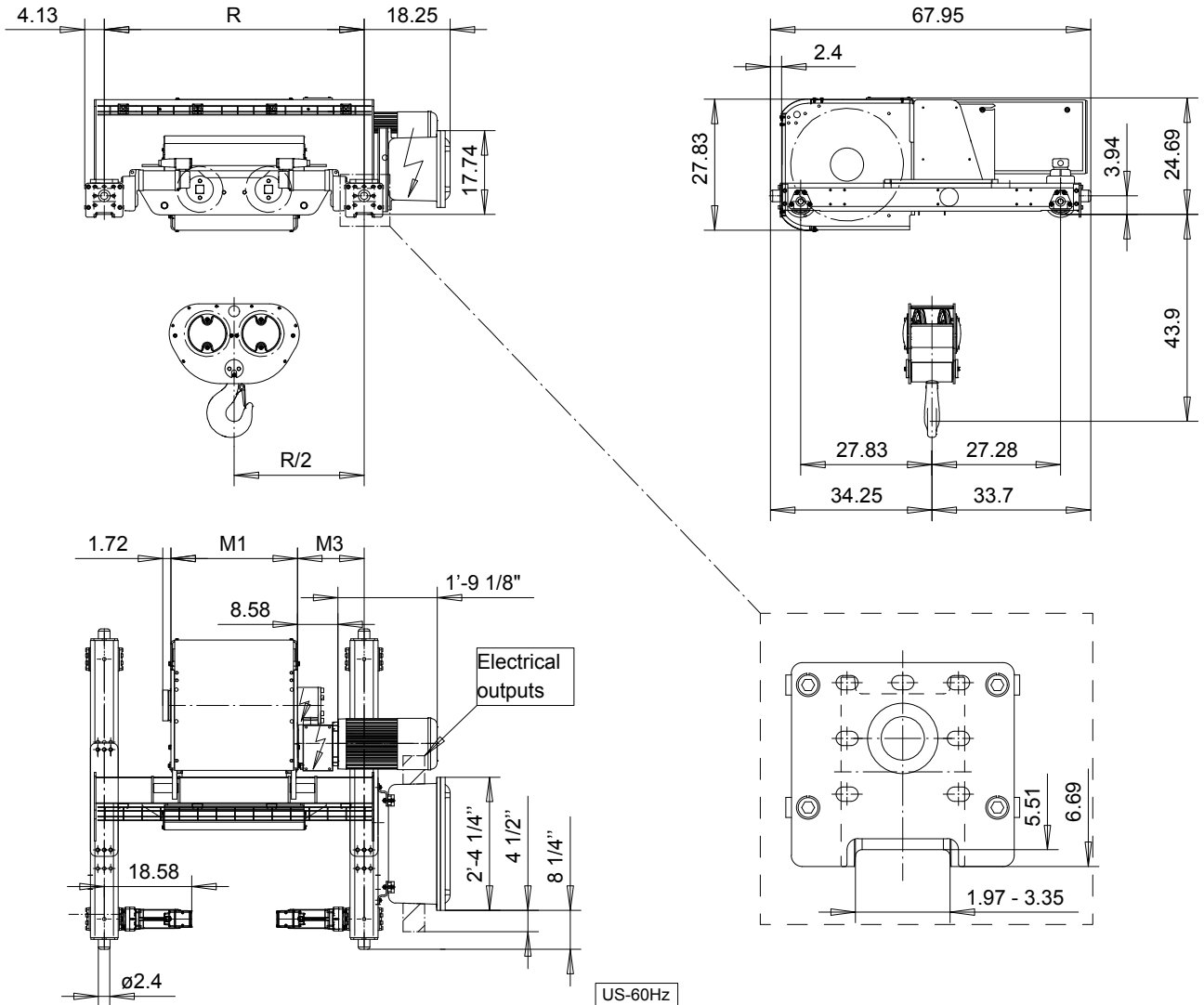


R&M SPACEMASTER EX

DOUBLE GIRDER, 4 PART DOUBLE
SX6 EX 042...D0



| Load (TON) | Class ASME | Hoisting speed | |
|---------------|---------------|----------------|--------|
| | | 16/2.4 | 20/3.1 |
| 12 1/2 | H4+ | 16/2.4 | 20/3.1 |
| 15 | H4 | 16/2.4 | 20/3.1 |
| 20 | H3 | 16/2.4 | - |

| HOL (ft-in) | Length code | M1 (in) | M3 (in) | min R-max R (in) | Weight (lb) |
|----------------|----------------|------------|------------|---------------------|----------------|
| 26'-3" | E | 26 7/8 | 14 1/8 | 55 1/8 | 3020 |
| 36'-1" | F | 32 3/4 | 17 1/16 | 66 15/16 | 3219 |
| 47'-7" | G | 40 1/4 | 13 3/8 | 66 15/16 - 78 3/4 | 3373 |
| 64'-0" | H | 50 1/16 | 14 5/16 | 78 3/4 - 94 1/2 | 3616 |
| 85'-4" | J | 63 7/8 | 15 5/16 | 94 1/2 - 106 5/16 | 3946 |
| 103'-4" | K | 75 11/16 | 15 5/16 | 106 5/16 - 122 1/16 | 4343 |
| 126'-4" | L | 89 7/16 | 16 5/16 | 122 1/16 - 133 7/8 | 4872 |
| 141'-1" | M | 99 5/16 | 17 5/16 | 133 7/8 - 149 5/8 | 5203 |
| 160'-9" | N | 111 1/8 | 19 1/4 | 149 5/8 - 165 3/8 | 5600 |

min R is minimum rail gauge when service platform is supplied. Weight calculated at minR. Weight increases with longer gauges. Standard rail gauges are 55 1/8", 66 15/16", 78 3/4", 94 1/2", 106 5/16", 122 1/16", 133 7/8", 149 5/8", and 165 3/8"

R&M reserves the right to alter or amend the above information without notice