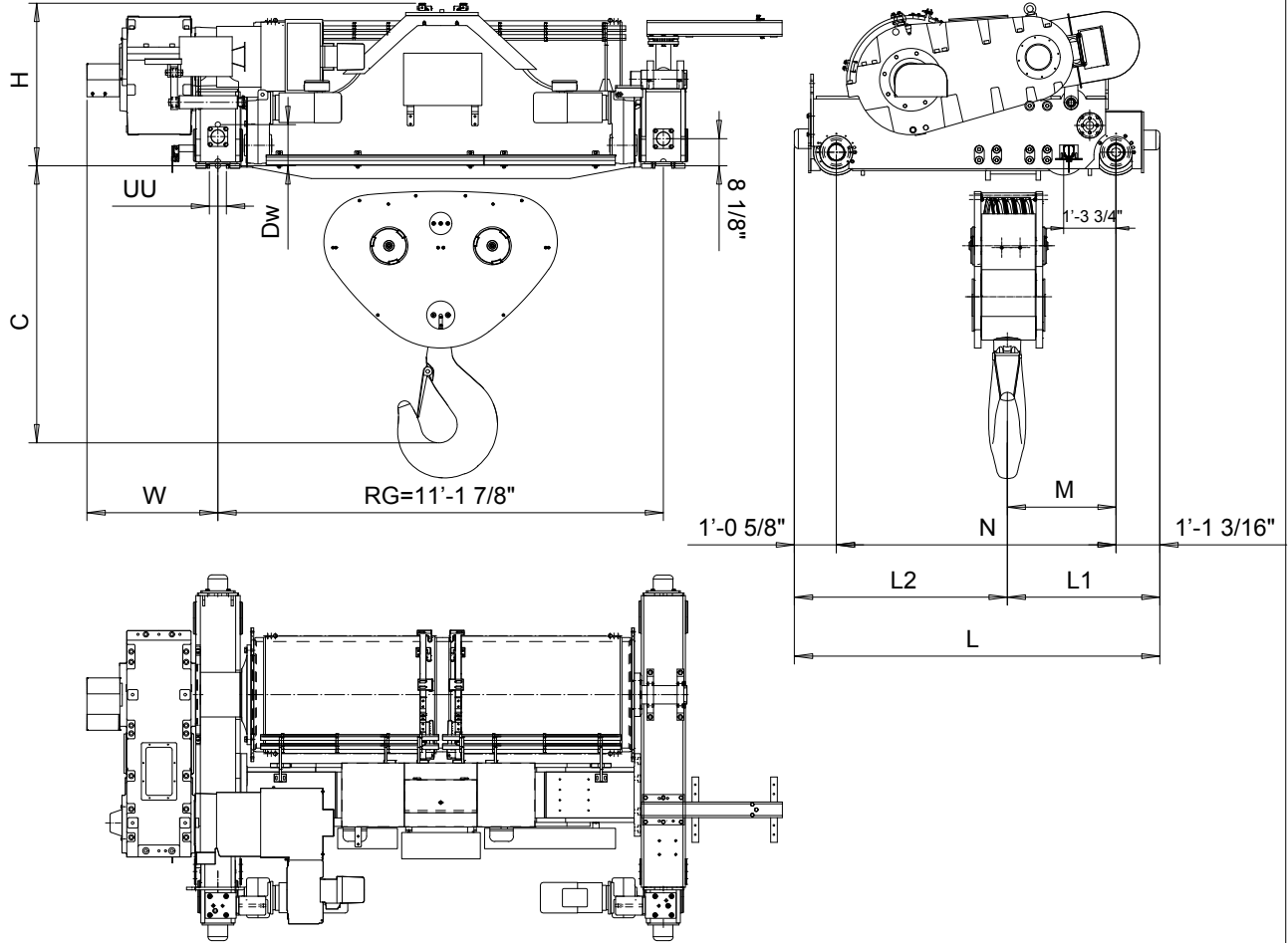


Hoist type:
SXL20...R3400

US units

6-WHEEL TROLLEY



Trolley	Duty 03...06	Hoisting trolley dimensions (inch)							Rail wheel (inch)		C (in)	Weight (lb)
		H	M	N	L	L1	L2	W	Dw	UU*	(34)	(34)
SXL20022	X	49 1/4"	36 1/4"	84 1/16"	109 7/8"	49 7/16"	60 7/16"	39 3/8"	12.40"	4 1/4"	76 1/4"	32827
SXL20032	X	49 1/4"	36 1/4"	84 1/16"	109 7/8"	49 7/16"	60 7/16"	39 3/8"	12.40"	4 1/4"	84 1/2"	33489
SXL20042	X	49 1/4"	35 1/16"	84 1/16"	109 7/8"	48 1/4"	61 5/8"	39 3/8"	12.40"	4 1/4"	74 1/2"	34613
SXL20052	X	49 1/4"	34 5/8"	84 1/16"	109 7/8"	47 7/8"	62"	39 3/8"	12.40"	4 1/4"	88 3/8"	35671
SXL20062	X	49 1/4"	33 7/8"	84 1/16"	109 7/8"	47 1/16"	62 13/16"	39 3/8"	12.40"	5"	79"	36840
SXL20082	X	49 1/4"	32 11/16"	84 1/16"	109 7/8"	45 7/8"	64"	39 3/8"	12.40"	5"	83 1/4"	38537

Weight of the service platform is not included into the trolley weight. *UU based on 4" or 4 3/4" rail.

DESHPYO Design 2011-06-17 Date				Chd	Appd	Ref Drawing		
Rev				TROLLEY; DOUBLE GIRDER				1:27
Explanation				SXL20				
Date				SXL20-R3400				Folder
Revised by				DA003421				
Checked by				R&M MATERIALS HANDLING INC.				Issue 1
<p>This document is the absolute property of R&M Materials Handling, Inc. This document must not be copied without the written permission of R&M Materials Handling, Inc. The contents thereof must not be disclosed to a third party nor be used for any unauthorized purpose. Contravention will be prosecuted.</p>				<p>R&M MATERIALS HANDLING, INC. HOIST & CRANE PRODUCTS SPRINGFIELD, OHIO</p>				