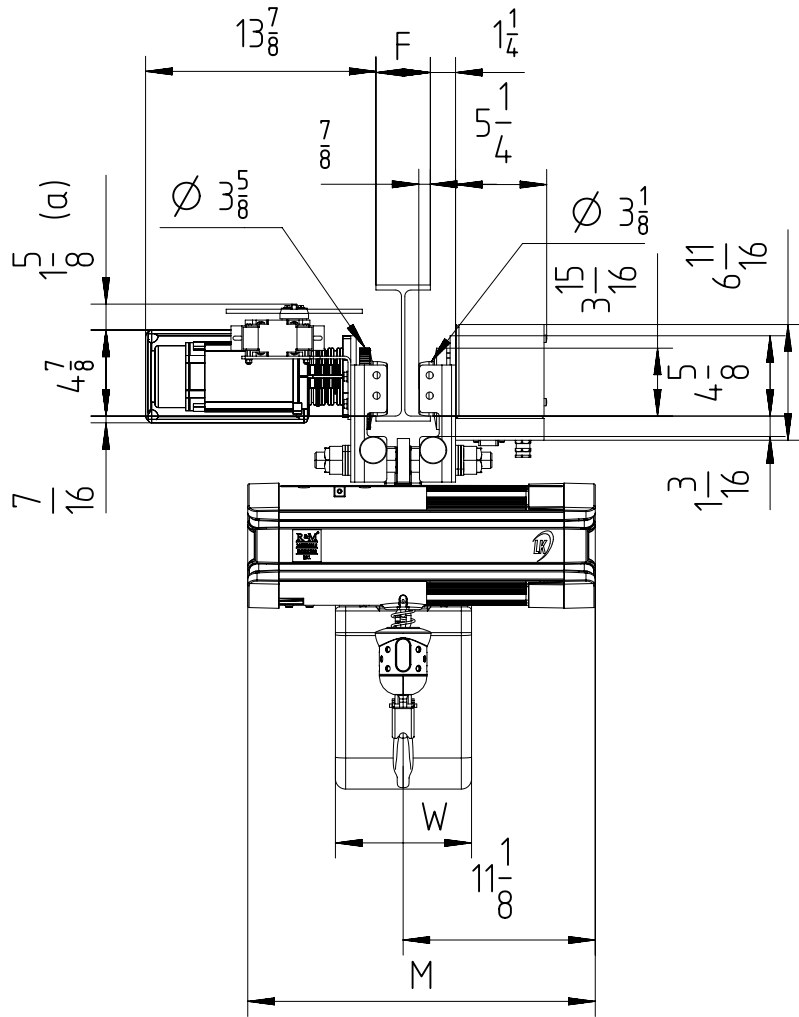
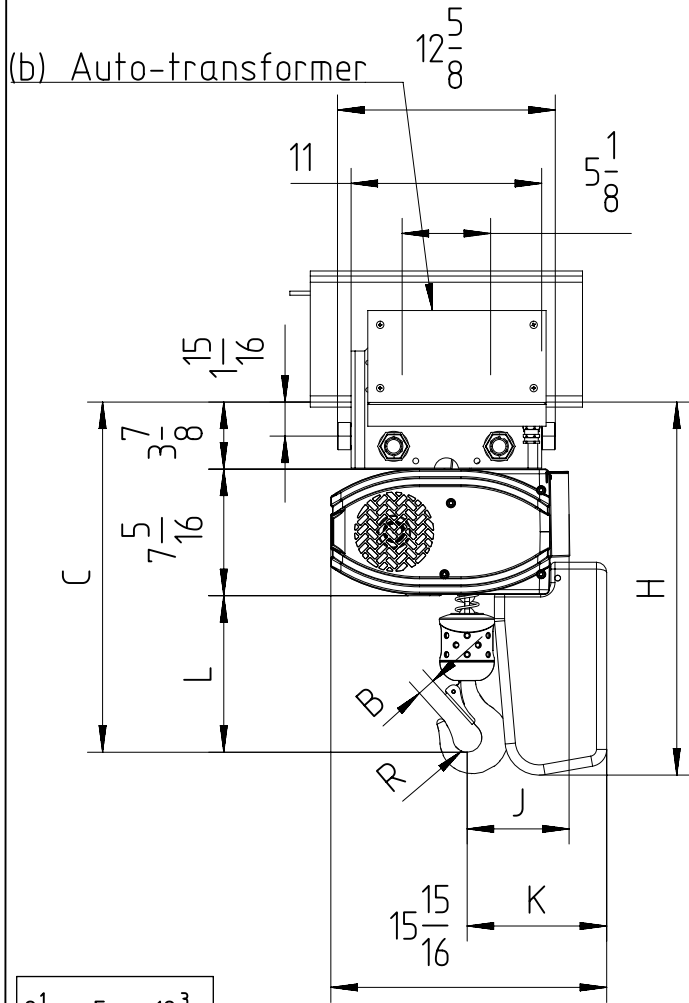


Fixed to electric travel trolley C2 max 2 TON (perpendicular version)



$$2\frac{1}{2} < F < 12\frac{3}{16}$$

- (a) Note: Trolley limit switch is optional.
 (b) If the voltage is less than 380V or more than 480V, the trolley motor needs an autotransformer as drawn.
 Note: In case of 2-fall hoist, coupling suspension is rotated by 180°.
 Note: Mini. radius of curve for trolley 2 TON is 6.56ft.

Chain Size (mm)	Max load (TON)	Falls	Chain bag capacity (ft)	Dimensions (inch)										Weight of chain (lb/ft)	Estimated weight of hoist incl. trolley w/o chain (lb)			
				B	C	L	R	J	K	H	W	M			LK	LK Inverter	GLS	DB
												LK	LK Inverter/DB/GLS					
7X20	1 1/4	1	19	1	20 1/4	9	7 7/8	5 7/8	8 1/8	20 3/8	7 7/8	20 1/16	25 1/4	0.75	229	249	234	249
			52							25 7/8								
			98							28 5/8								
	2	2	19 (*)	1 1/4	23	11 3/4	1	6 (**)	9 1/4	20 3/8	7 7/8	20 1/16	25 1/4	0.75	218	238	223	238
			52 (*)							25 7/8								
			98 (*)							28 5/8								

GLS: Gear Limit Switch
 DB: Double Brake

(*) In case of 2-fall hoist, available lifting height is half of the chain bag maximum capacity
 (**) In case of 2-fall hoist, Counter weight is not needed.