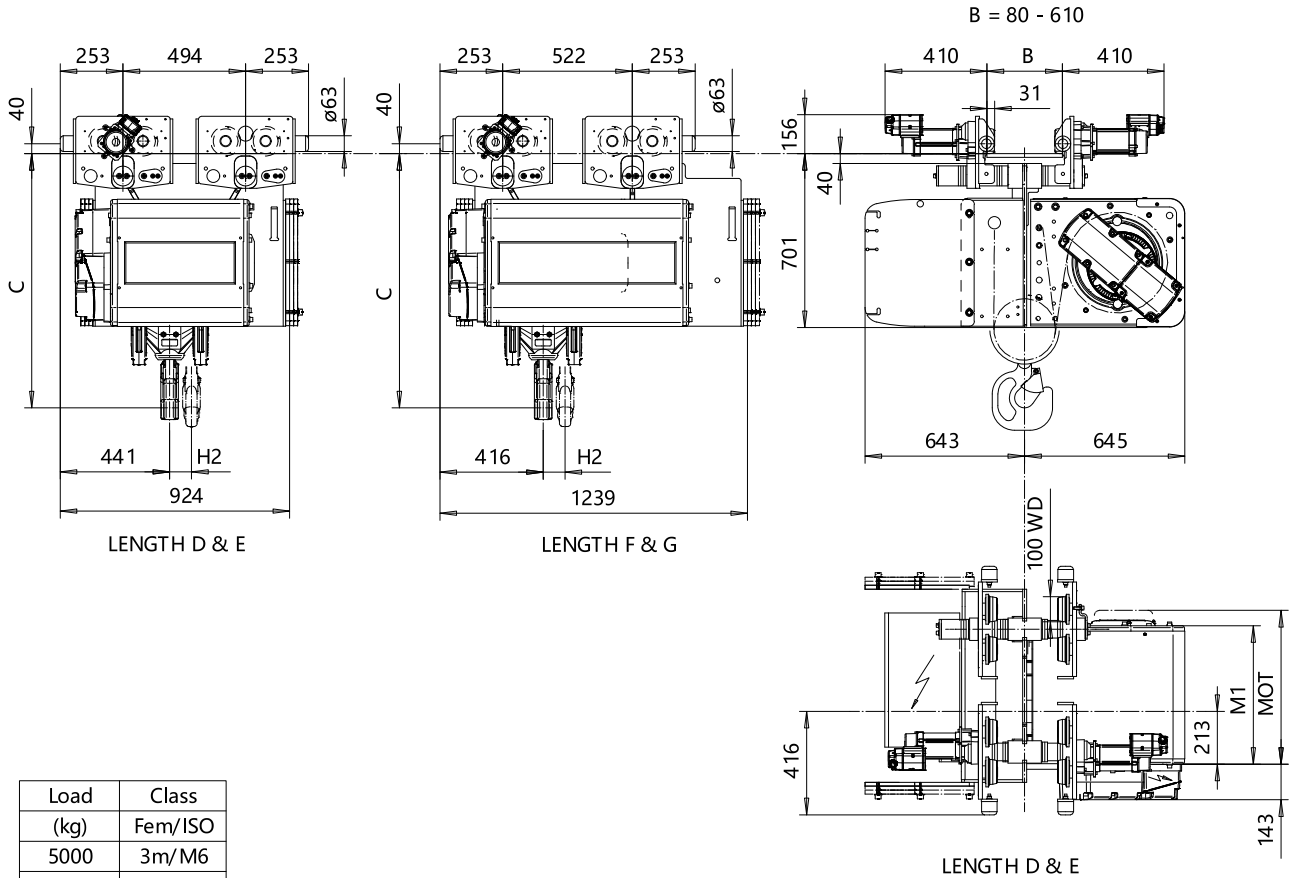


NORMAL HEADROOM, 4 PART SINGLE
Hoist type:
SX5 041...N0

SI



Load (kg)	Class
5000	Fem/ISO 3m/M6
6300	3m/M6
8000	3m/M6
10000	2m/M5

Motor	P5	P6	P7	A5	S5	S7
MOT (mm)	578	578	618	498	606	757
Weight (kg)	58	85	105	45	53	81

HOL (m)	Length code	M1 (mm)	H2 (mm)	Approx Weight (kg)
9	D	558	88	790
12	E	678	118	850
16	F	828	156	930
20	G	1018	204	990

Headroom - C dimension	
Standard	1034 mm
with HS22 Hook operated limit switch	1144 mm

Approx. Weight calculated with P5 motor.

This document is the absolute property of R&M Materials Handling, Inc. This document must not be copied without the written permission of R&M Materials Handling, Inc. The contents thereof must not be disclosed to a third party nor be used for any unauthorized purpose. Contravention will be prosecuted.

ETPAL Design	ETPAL Chd	Appd	Ref Drawing	QC-N-04
2002-08-30 Date	TROLLEY; NORMAL HEADROOM			1 of 13
SLEDDOCV Designer Dept	4 ROPE FALLS			FoMkr
R&M MATERIALS HANDLING INC.	R&M MATERIALS HANDLING INC. HOIST & CRANE PRODUCTS SPRINGFIELD, OHIO	D002120-A		Issue 10