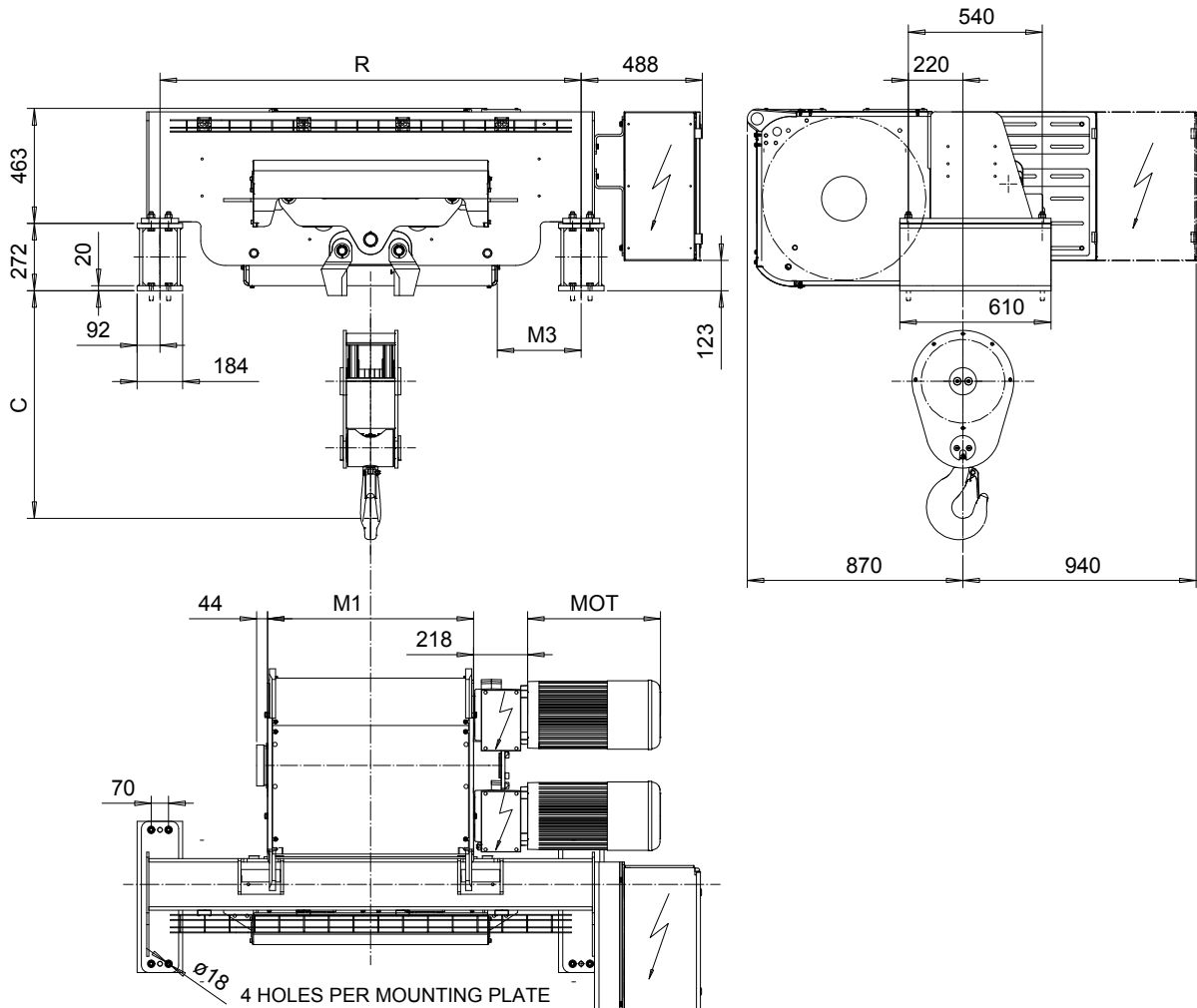


FOOT MOUNT, 2 PART DOUBLE

Hoist type:

SX7 022...F0

SI-50Hz



HOL	HOL*	Length	R	M1	M3	Approx Weight
(m)	(m)	code	(mm)	(mm)	(mm)	(kg)
15.5	9	F	1700	832	434	1400
20.5	14	G	1700	1022	339	1500
27.5	21	H	2400	1272	565	1600
37.5	31	J	2400	1622	389	1800
46	39.5	K	3100	1922	339	2000
55.5	49	L	3100	2272	414	2200
62.5	56	M	3800	2522	840	2400
71	64.5	N	3800	2822	690	2600

HOL* with optional drum brake Weight of drum brake is 80 kg.

Motor	P6	P7	P8	A7	S7	S8	SA
MOT (mm)	536	576	711	536	715	763	803
Weight (kg)	85	105	106	71	81	97	120

Load	Class
(kg)	Fem/ISO
12500	3m/M6
16000	2m/M5
20000	1Am/M4

Headroom - C dimension	
Standard	918 mm
with HS22 Hook operated limit switch	968 mm

Hoist weight calculated with P6 motor weight and without drum brake.

This document is the absolute property of R&M Materials Handling, Inc. This document must not be copied without the written permission of R&M Materials Handling, Inc. The contents thereof must not be disclosed to a third party nor be used for any unauthorized purpose. Contravention will be prosecuted.

ETTPAL Design	ETTPAL Chd	Appd	Ref Drawing	QE-F-22
2003-01-13 Date	HOIST; FIXED			1:13
SLEODOCV Owner Dept	2X2 ROPE FALLS			Folder
R&M MATERIALS HANDLING INC.	R&M MATERIALS HANDLING INC. HOIST & CRANE PRODUCTS SPRINGFIELD, OHIO	D006944-A		Issue 1/2018