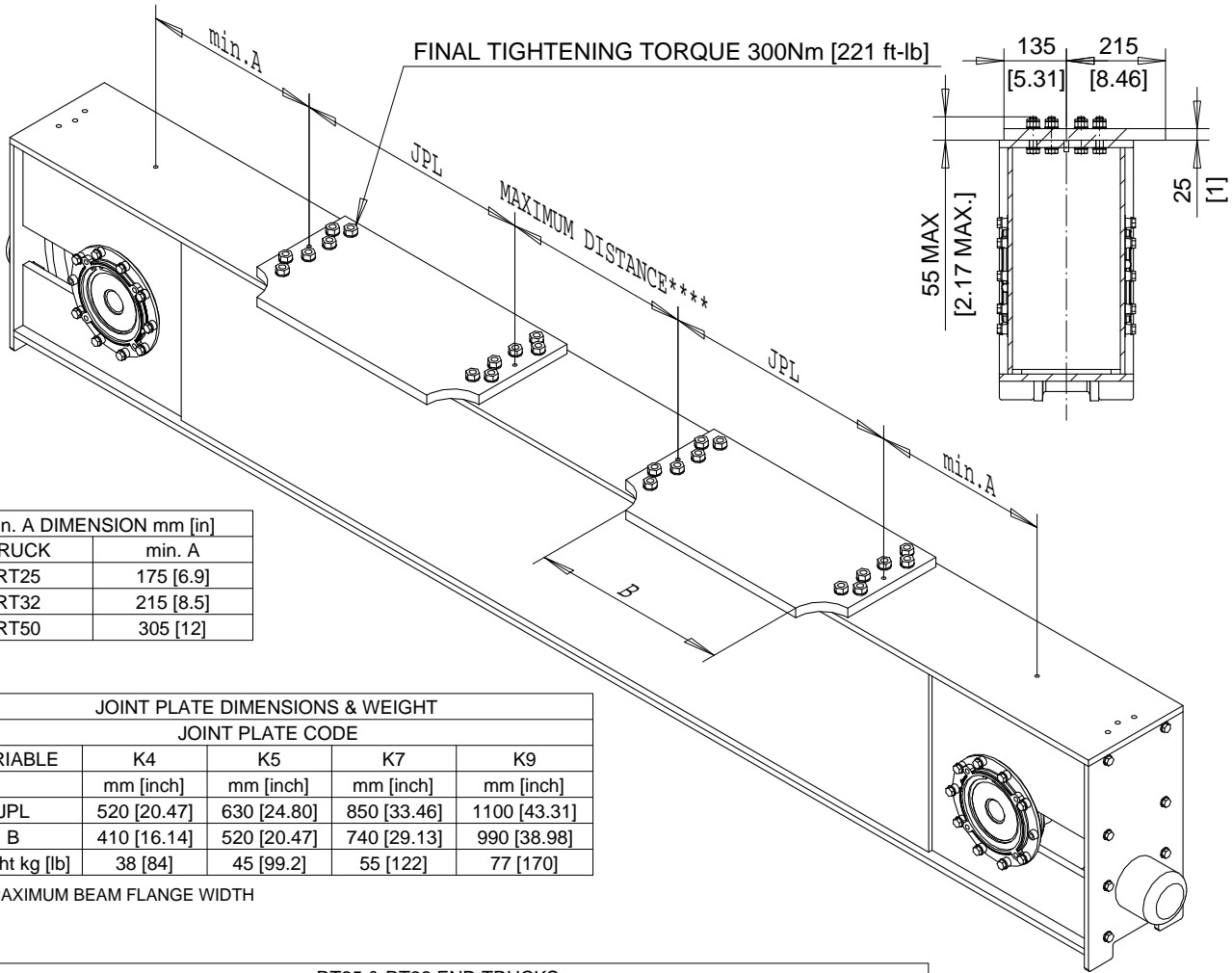


TOP JOINT PLATE TYPE K

FOR RT25, RT32 & RT50 END TRUCKS
 DG TRUCK SHOWN

QX.JPT_K



min. A DIMENSION mm [in]	
TRUCK	min. A
RT25	175 [6.9]
RT32	215 [8.5]
RT50	305 [12]

JOINT PLATE DIMENSIONS & WEIGHT				
JOINT PLATE CODE				
VARIABLE	K4	K5	K7	K9
	mm [inch]	mm [inch]	mm [inch]	mm [inch]
JPL	520 [20.47]	630 [24.80]	850 [33.46]	1100 [43.31]
B	410 [16.14]	520 [20.47]	740 [29.13]	990 [38.98]
Weight kg [lb]	38 [84]	45 [99.2]	55 [122]	77 [170]

B = MAXIMUM BEAM FLANGE WIDTH

RT25 & RT32 END TRUCKS						
MAXIMUM DISTANCE **** between TWO CONNECTION PLATES						
WHEELBASE	RT25 K4	RT25 K5	RT25 K7	RT32 K4	RT32 K5	RT32 K7
	mm [inch]	mm [inch]	mm [inch]	mm [inch]	mm [inch]	mm [inch]
2200 [86.61]	810 [31.88]	590 [23.23]	150 [5.91]	730 [28.74]	510 [20.09]	70 [2.75]
2700 [106.3]	1310 [51.57]	1090 [42.9]	650 [25.59]	1230 [48.43]	1010 [39.76]	570 [22.44]
3100 [122.05]	1710 [67.32]	1490 [58.66]	1050 [41.34]	1630 [64.17]	1410 [55.51]	970 [38.19]
3800 [149.6]	2410 [94.88]	2190 [86.22]	1750 [68.90]	2330 [91.73]	2110 [83.07]	1670 [65.75]
4500 [177.2]	3110 [122.44]	2890 [113.8]	2450 [96.46]	3030 [119.29]	2810 [110.63]	2370 [93.31]
5000 [196.9]	3610 [142.13]	3390 [133.5]	2950 [116.1]	3530 [138.98]	3310 [130.3]	2870 [113]
5500 [216.54]	4110 [161.81]	3890 [153.15]	3450 [135.83]	4030 [158.66]	3810 [150]	3370 [132.68]

MAXIMUM DISTANCE **** between TWO CONNECTION PLATES			
WHEELBASE	RT50 K5	RT50 K7	RT50 K9
	mm [inch]	mm [inch]	mm [inch]
2200 [86.61]	330 [13]	----	----
2700 [106.3]	830 [32.68]	390 [15.35]	----
3100 [122.05]	1230 [48.43]	790 [31.10]	290 [11.42]
3800 [149.6]	1930 [75.98]	1490 [58.66]	990 [38.98]
4500 [177.2]	2630 [86.22]	2190 [86.22]	1690 [66.54]
5000 [196.9]	3130 [123.2]	2690 [106]	2190 [86.22]
5500 [216.54]	3630 [142.91]	3190 [125.59]	2690 [105.91]

Chd	Appd	p_QX.JPT_K File
2002-08-08 Date	QX.JPT_K	
R&M MATERIALS HANDLING INC.	R&M Materials Handling Inc. 4501 Gateway Blvd, Springfield	
	JOINT PLATE TYPE K	Issue 2/2006